

User Manual

Eshare



2020

Contents

User Manual	1
1. About EShare.....	4
1.1 Main Features	4
1.2 Feature List	5
1.3 Client Requirements	6
1.4 Network Requirements	6
ESharePro.....	6
AirPlay/iMirror	6
2. EShare APP GUIDE	7
2.1 Download THE EShare APP	7
2.2 Guide for Android Client Devices.....	7
2.2.1 Connect to the Large Display	7
2.2.2 File Sharing	8
2.2.3 Share Screen.....	9
2.2.4 Full-Screen.....	10
2.2.5 TV Mirror	11
2.2.6 Wireless Annotations.....	11
2.2.7 Camera	11
2.2.8 Remote Control	12
2.2.9 Share Files from Other APPs to Large Display	12
2.3 Guide for Windows/macOS/Chrome OS/Ubuntu Client Devices	13
2.3.1 Connect to the Large Display	13
2.3.2 Share Screen.....	13
2.3.3 TV Mirror	14

2.3.4 Wireless Annotations	15
2.3.5 Full Screen	15
2.3.6 Invitation for Mirroring.....	16
3. Guide for ESharePro.....	17
3.1 Multiple Screens	17
3.1.1 Multiple Screens Settings	17
3.1.2 Multiple Screens Display.....	17
3.1.3 Switch the Audio Output Source	18
3.1.4 Full-Screen or Multiple Screens.....	18
3.2 Display Group Settings.....	19
3.2.1 Display Group Settings	19
3.2.2 Share Screen to the Display Group	19
3.3 Moderator Mode	20
3.3.1 Options for “Share Screen”	21
3.3.2 Options for “View, Control and Wireless Annotation”	21
3.3.3 Other Options in Moderator Control Center	22
4. Technical SUPPORT	24

1. ABOUT ESHARE

EShare is a set of multi-screen interactive software applications designed for sharing, wireless display and remote control between mobile devices (such as phones, tablets, laptops, etc.) and large displays.

1.1 MAIN FEATURES

- **File sharing:** share any file (such as audio, video, photo, office document, PDF, e-book, APK, etc.) from a mobile phone or tablet to large displays.
- **Remote control:** supports wireless control via wireless mouse, air mouse, keyboard, touchpad, remote controller, etc.
- **Wireless camera and microphone:** share the images or audio from your phone camera or microphone to the large display in real-time.
- **TV Mirror:** mirror the large display to the client device, and touch to control the large display via the client device.
- **Mirroring:** mirror the client device screen (such as iPhone, iPad, Android device, MacBook, Chromebook, Windows PC and Ubuntu PC, etc.) to the large display or projector, and touch to control client devices from the large display without touch control cable, VGA or HDMI.
- **AirPlay:** share images, audio, videos, screen of iPhone or iPad to the large display with the feature of "Screen Mirroring" of iPhone or iPad.
- **DLNA:** support any client APP compatible with DLNA protocol.
- **Wireless annotations:** annotate the large display via phone in real-time inside the TV mirror function.
- **Multiple screens:** share multiple device screens to a large display at the same time, and the screen of the large display will be split automatically.
- **Display group:** users can share their screen from one client device to multiple large displays wirelessly.
- **Moderator control mode:** the moderator can control the client devices for screen sharing, TV Mirror, wireless annotations, full-screen display, etc.

1.2 FEATURE LIST

Feature Description	
Video	All popular video formats
Audio	All popular video formats
Images	Share images
	Real-time scaling
	Rotate
Documents	All Office documents
	PDF and others
Remote control	Wireless mouse
	Air mouse
	Wireless keyboard (supporting the input methods of voice, writing...)
	Wireless touchpad
	Common keys (Home, Menu, Back, Vol+/-, etc.)
	Application list of large display
Camera	Wireless camera
Wireless annotations	Annotate the large display via phone in real-time
TV mirror	Mirror the large display to phone or laptop, and touch on the client device to control the large display wirelessly
iOS mirroring	Mirror the screen of the iOS device to the large display
Android mirroring	Mirror the screen of the android device to the large display, and support annotations
Windows mirroring	Mirror the screen of Windows PC to the large display, and touch feedback from the large display to PC
macOS mirroring	Mirror MacBook screen to the large display, and touch feedback from the large display to MacBook
Chrome mirroring	Mirror the screen of Chromebook to the large display
Ubuntu mirroring	Mirror the screen of Ubuntu PC to the large display
DLNA	Support any APP compatible with DLNA protocol
Multiple screens	Share multiple screens to the large display, and the screen of the large display will be split automatically
Moderator control	Control the client devices for screen sharing, TV Mirror, wireless annotations, full-screen display and so on.

1.3 CLIENT REQUIREMENTS

Please ensure the client devices meet the following requirements:

- Android 5.0 or later
- Mac OS 10.9 or later
- iOS 9.0 or later
- Windows 7/8/10
- Chrome OS
- Ubuntu 12.04 or later

1.4 NETWORK REQUIREMENTS

ESHAREPRO

Please ensure that ESharePro and EShare client apps are in the same network.

TCP Ports: 56789, 25123, 8121 & 8000

UDP Ports: 48689, 25123

DNS: h1.ee-share.com

Please enable the broadcast function of the router.

To get a highly reliable, robust user experience, it is strongly recommended to connect the large display using Ethernet and the client device using a 5GHZ Wi-Fi band.

AIRPLAY/IMIRROR

Please ensure that the mDNS of network/AP/router (if possible) is enabled.

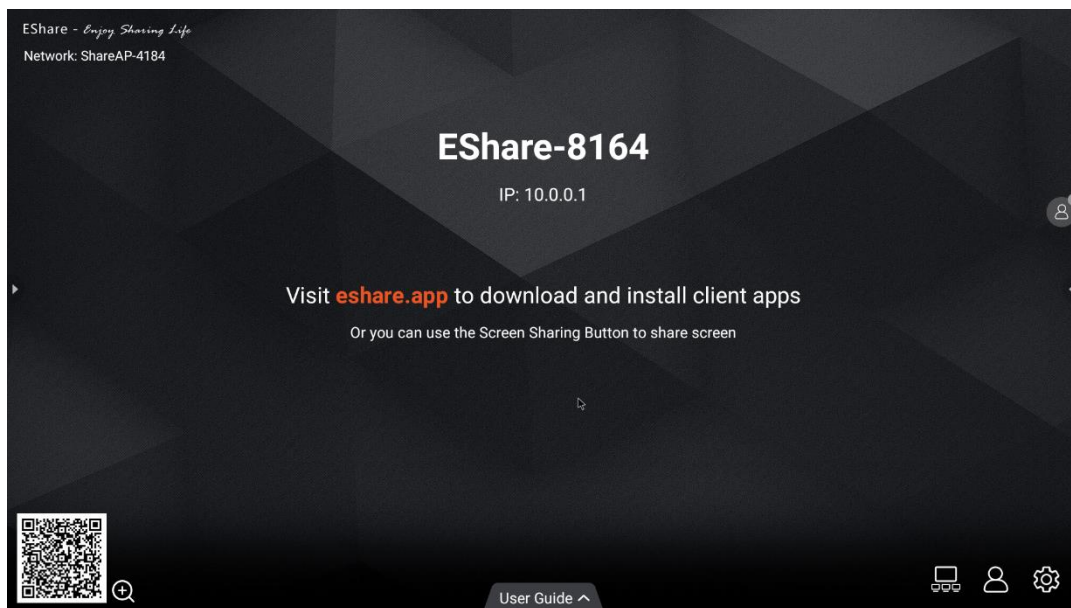
TCP Ports: 51040, 51030, 51020 & 51010

UDP Ports: 5353 (mDNS to broadcast AirPlay)

2. ESHARE APP GUIDE

2.1 DOWNLOAD THE ESHARE APP

Please ensure that your client device and the large display are in the same network, and then launch “ESharePro”. Next, scan the QR-code or visit “eshare.app” to download and install the EShare app.



2.2 GUIDE FOR ANDROID CLIENT DEVICES

2.2.1 CONNECT TO THE LARGE DISPLAY

Please ensure that your client device and the large display are in the same network.

- **Set “Device Name” as the connection mode (default setting):** launch the EShare app, and EShare will automatically search for large display devices in the same network, and then select the device in the device list to connect to the large display. Or you can enter IP or PIN code to connect to the large display.
- **Set “PIN Code (6 digits)/PIN code (8 characters)” as the connection mode:** launch the EShare app and enter the PIN code to connect to the large display.
- **Scan QR-code to connect:** launch EShare app and scan the QR code to connect to the large display.

07:55

Device List

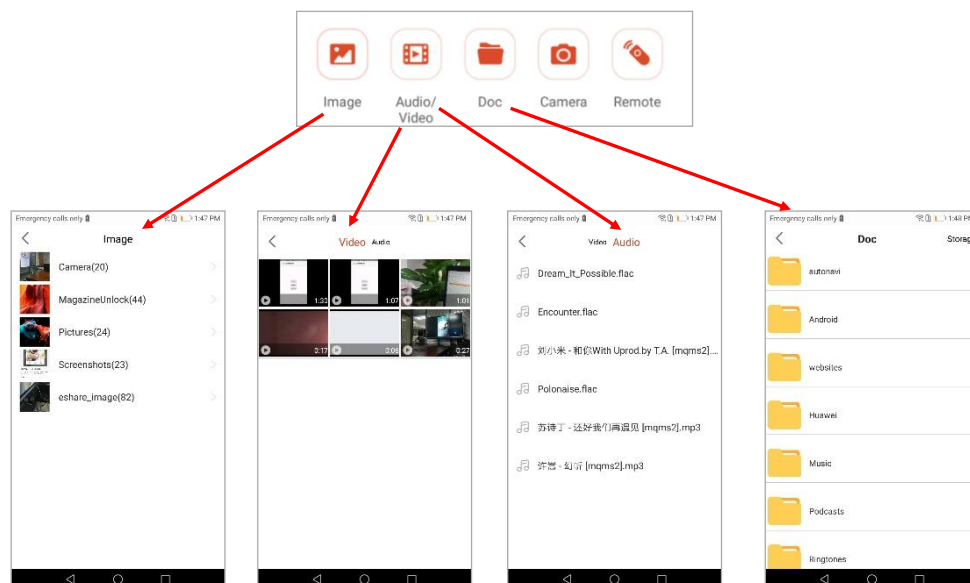
Enter "IP" or "PIN" code to connect >

EShare-118	192.168.0.205
EShare-2833	192.168.0.29
EShare-8164	192.168.0.166
EShare-85	192.168.0.195
EShare-8888	192.168.0.156
EShare-Itj	192.168.0.103

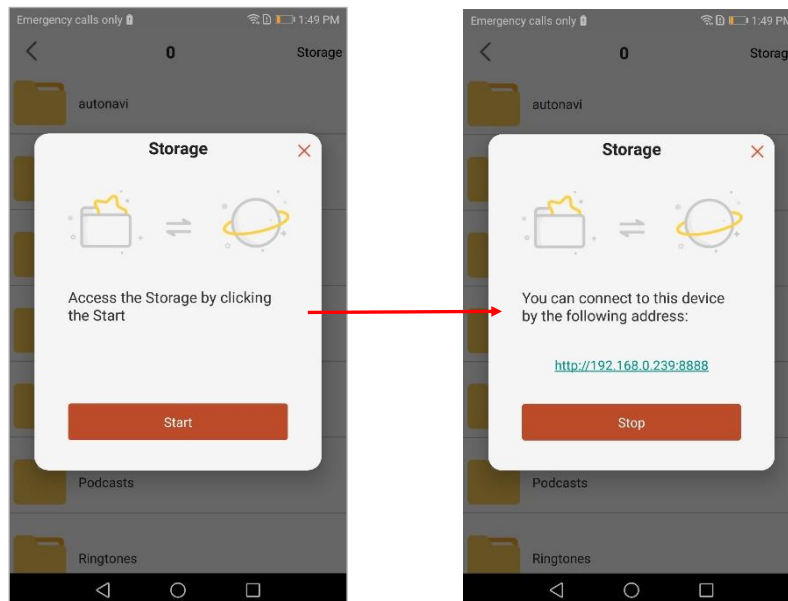


2.2.2 FILE SHARING

- **Image:** select any image to share it to the large display.
- **Audio/Video:** select any audio/video to share it to the large display.
- **Doc:** select any document to share it to the large display.

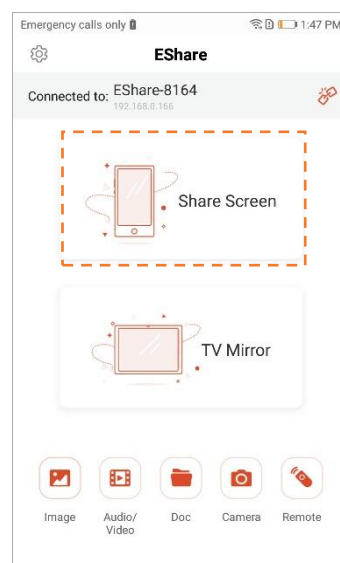


- **Storage:** tap "Storage" in the top right corner of Doc sharing page to start the wireless storage, and visit the URL to upload files to your phone's storage or download the files from it.

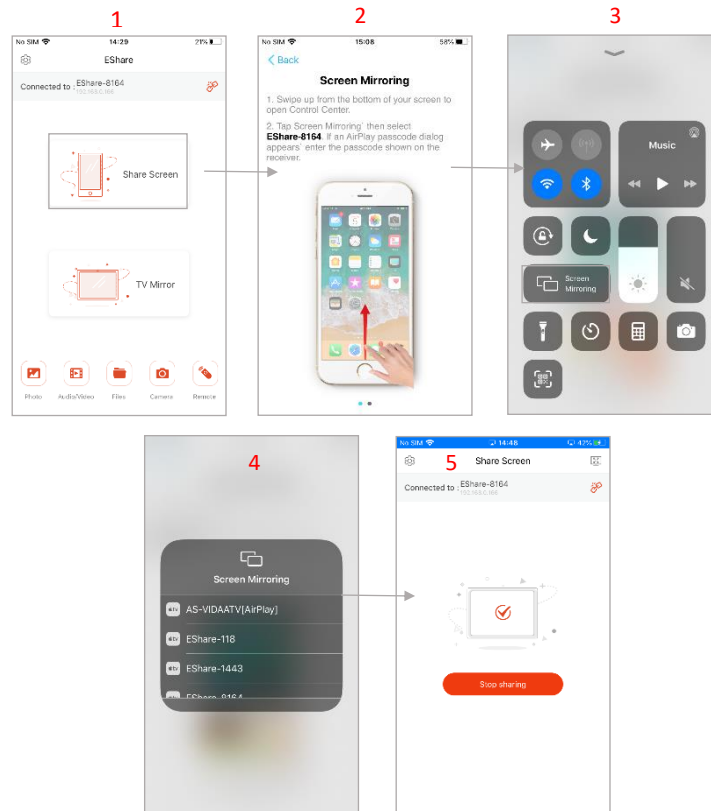


2.2.3 SHARE SCREEN

- **Android devices:** tap "Share Screen" to share screen to the large display.

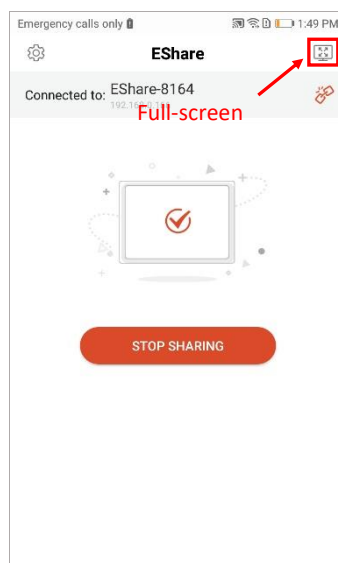


- **iOS devices:** tap "Share Screen" and follow the iOS screen sharing guide to share screen to the large display.



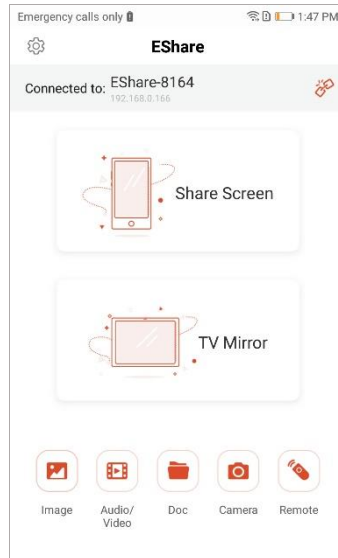
2.2.4 FULL-SCREEN

You can tap the full screen button to display your screen exclusively on the large display, even if two or more client devices are sharing the screen.



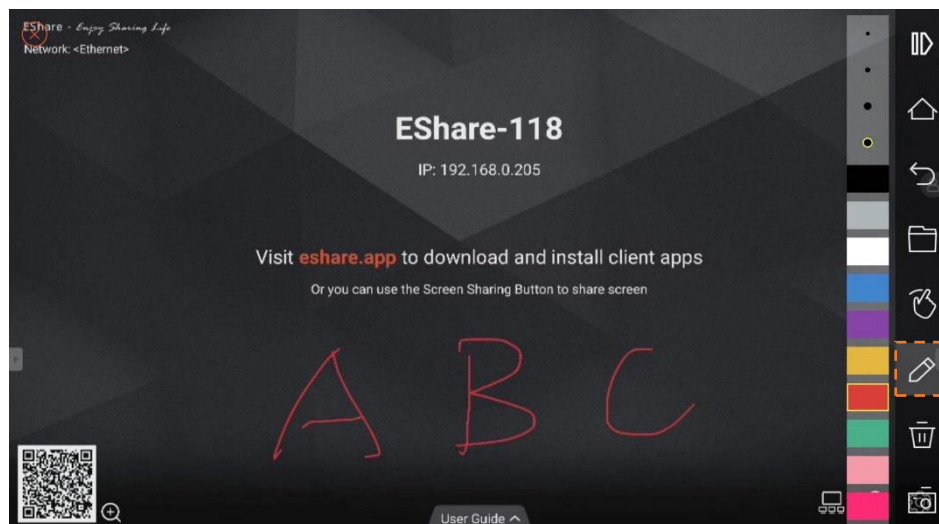
2.2.5 TV MIRROR

Tap “TV Mirror” to mirror the screen of the large display to your phone, and touch the phone to control the large display.



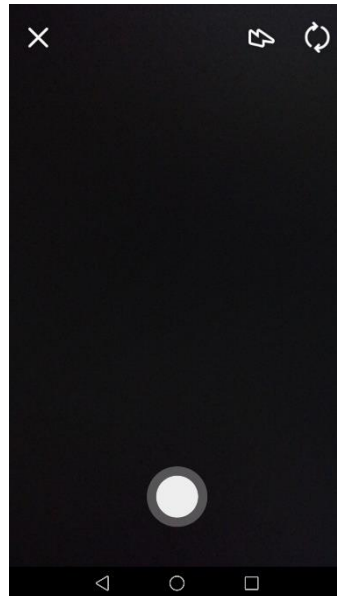
2.2.6 WIRELESS ANNOTATIONS

Tap "TV Mirror", tap the pen button in the sidebar to start wireless annotations on the large display.



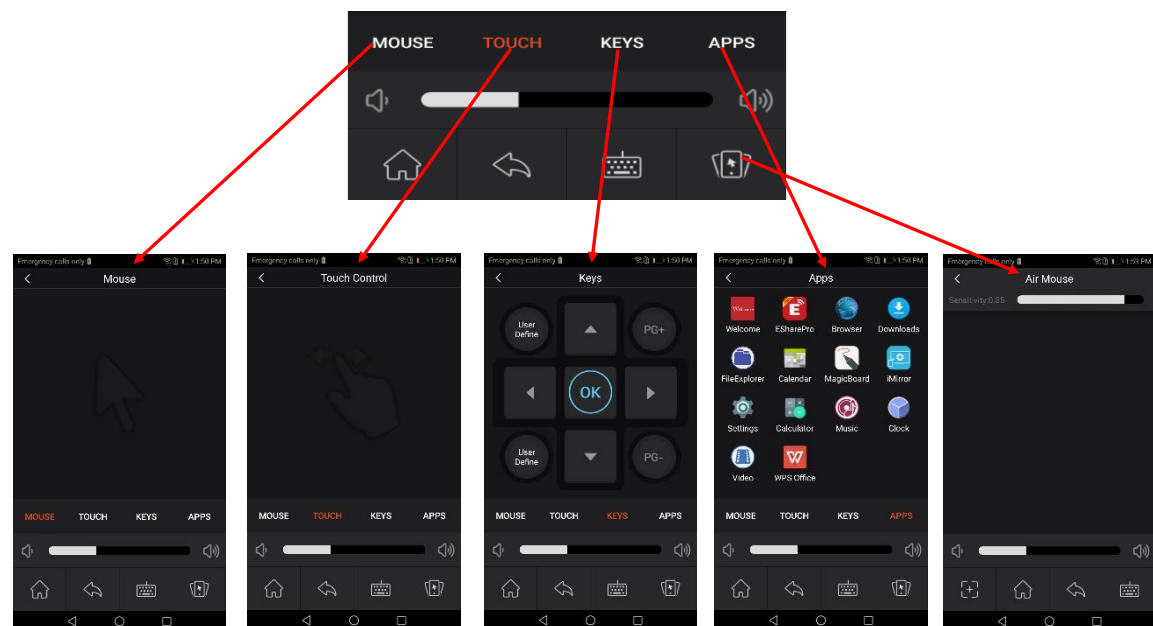
2.2.7 CAMERA

Tap “Camera” to share the photos or audio from your phone camera or microphone to the large display in real-time.



2.2.8 REMOTE CONTROL

Tap "Remote" to use your phone as wireless mouse, remote controller, keyboard, air mouse, etc.



2.2.9 SHARE FILES FROM OTHER APPS TO LARGE DISPLAY

In email, browser, file manager and other applications, you can share files to the large display through EShare app.

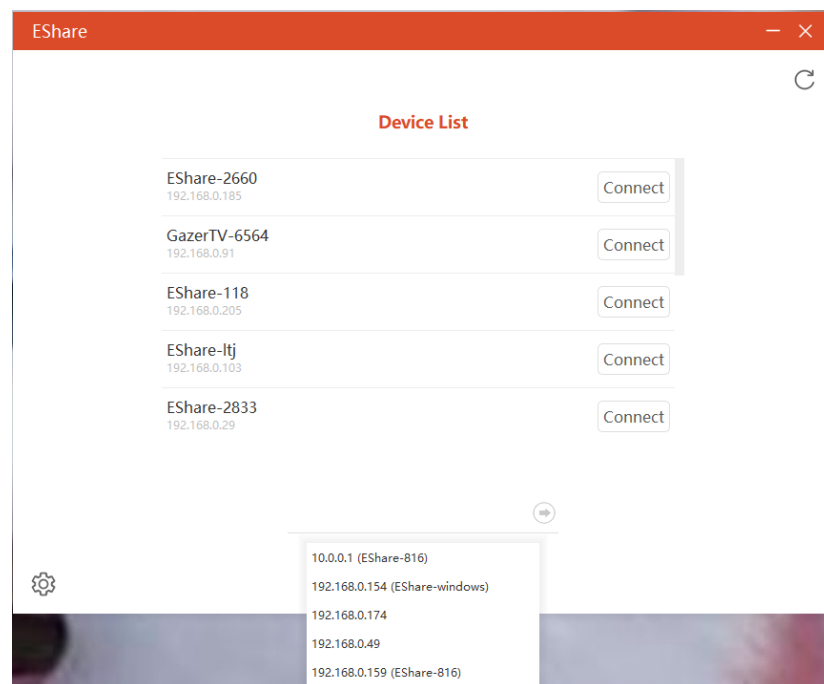
Or you can share files to the large display with other apps supporting DLNA.

2.3 GUIDE FOR WINDOWS/MACOS/CHROME OS/UBUNTU CLIENT DEVICES

2.3.1 CONNECT TO THE LARGE DISPLAY

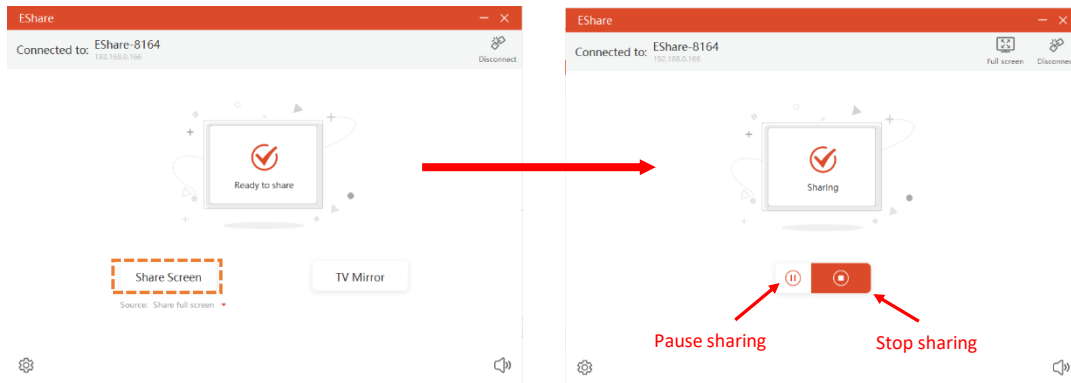
Please ensure that your Windows/macOS/Chrome OS/Ubuntu client devices and large display are in the same network.

- **Set “Device Name” as the connection mode (default setting):** launch the EShare app, and EShare will automatically search for large display devices in the same network, and then select the device in the device list to connect to the large display. Or you can enter IP or PIN code to connect with to large display.
- **Set “PIN Code (6 digits)/PIN code (8 characters)” as the connection mode:** launch the EShare app and enter the PIN code to connect to the large display.
- **Select the device in the history list to connect:** click the input box “Enter IP or PIN code to connect” and you will see the history list (if any). Select the device to connect with to large display.

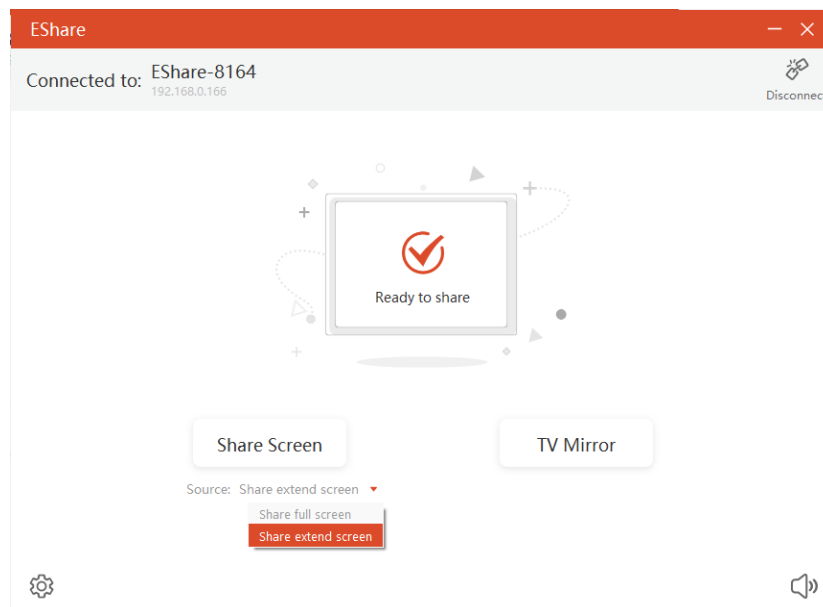


2.3.2 SHARE SCREEN

Tap "Share Screen" to share your PC screen to the large display, and touch to control client devices from the large display.

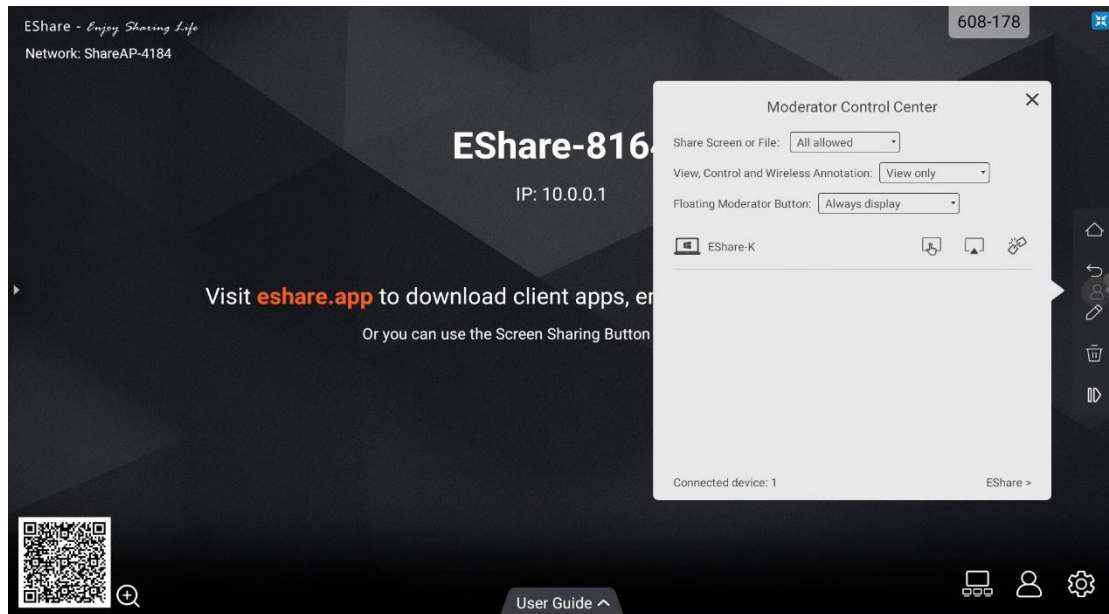


- **Share extend screen (for Win 10 only):** for Windows users, you can click “Source” to select “Share extend screen” to just share your extend screen to the large display.



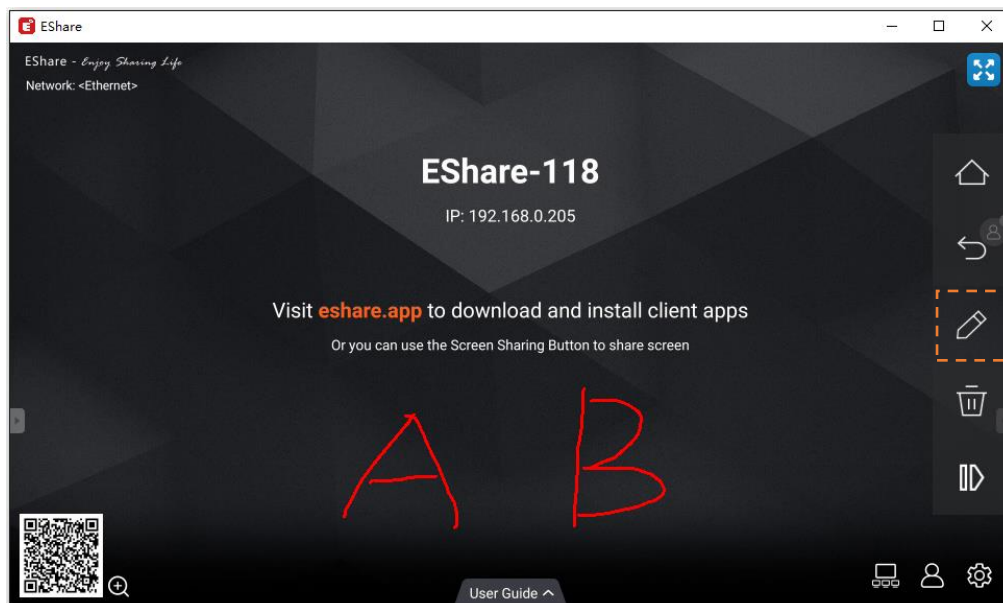
2.3.3 TV MIRROR

Tap “TV Mirror” to mirror the screen of the large display to your PC, and control the large display on PC side.



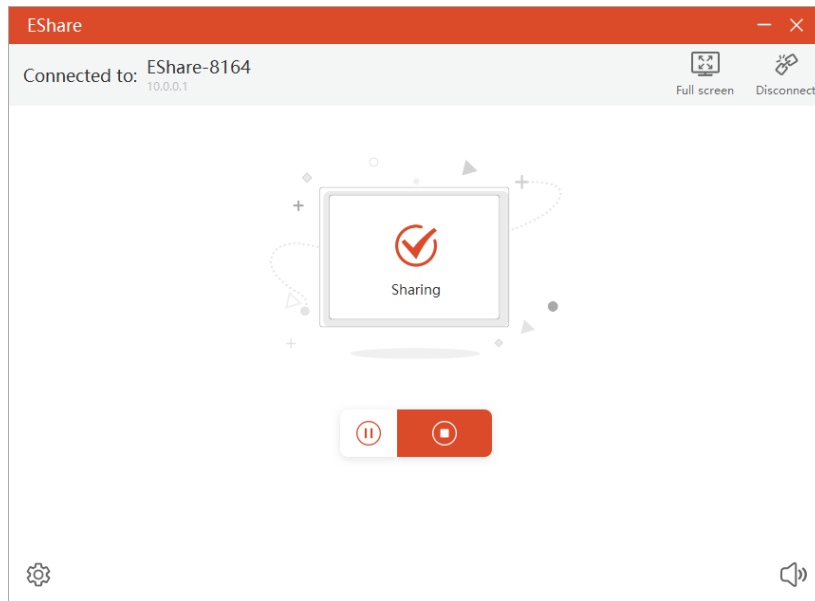
2.3.4 WIRELESS ANNOTATIONS

Tap "TV Mirror", and tap the pen button in the sidebar to start wireless annotations on the large display from the PC.



2.3.5 FULL SCREEN

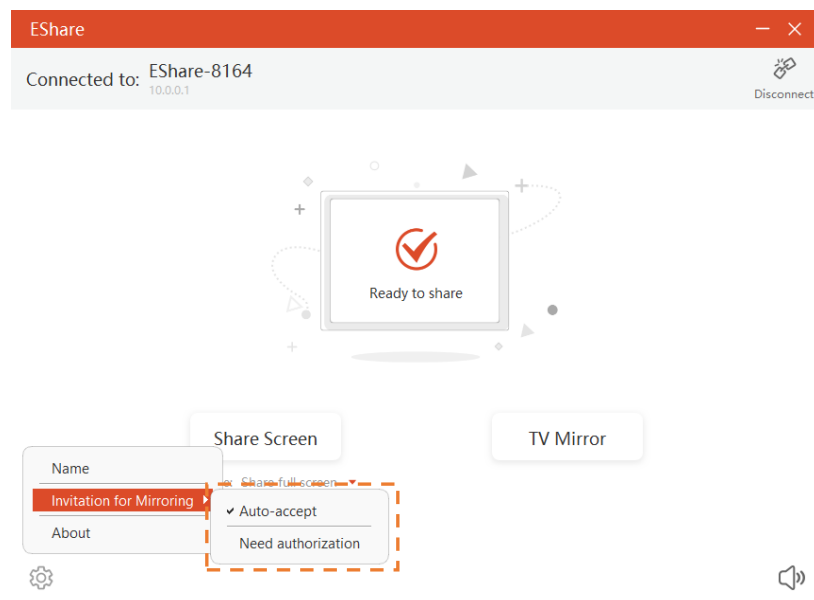
You can click the full screen button to display your screen exclusively on the large display, even if two or more client devices are sharing the screen.



2.3.6 INVITATION FOR MIRRORING

Click "Invitation for Mirroring" in Settings and there are two following options for you:

- **Auto-accept:** accept the moderator's invitation for screen sharing automatically. When the moderator taps the button "Share Screen" in Moderator Control Center, your PC screen will be displayed on the large display.
- **Notify me:** when the moderator taps the button "Share Screen" in Moderator Control Center, your PC screen won't be displayed on the large display until you accept the invitation.

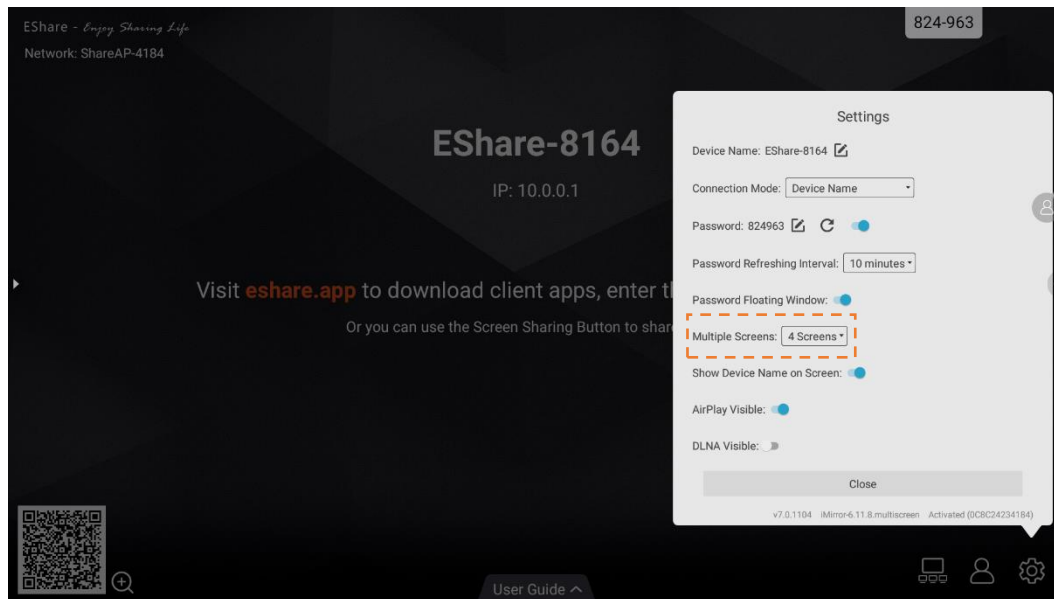


3. GUIDE FOR ESHAREPRO

3.1 MULTIPLE SCREENS

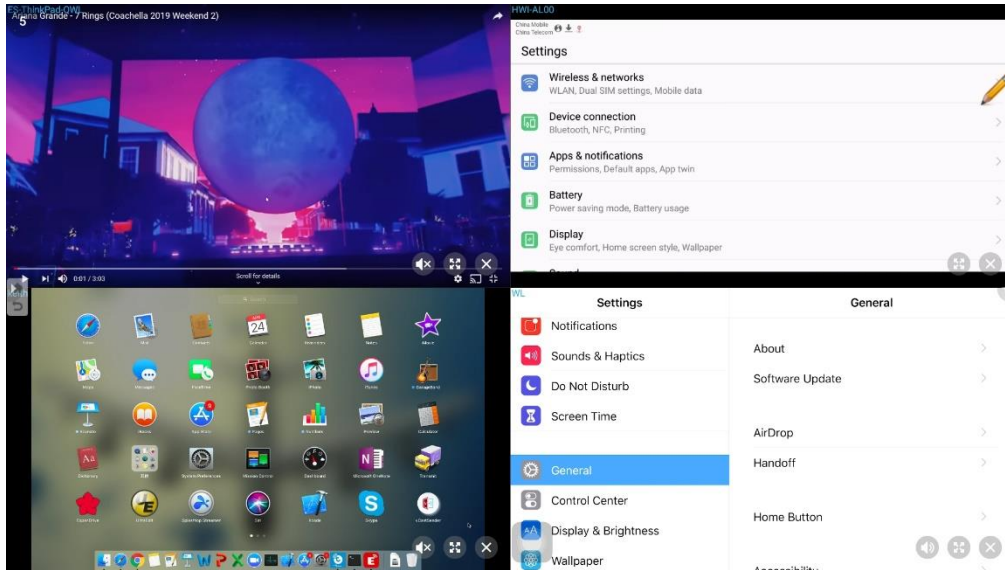
3.1.1 MULTIPLE SCREENS SETTINGS

Launch ESharePro on the large display, tap the “Settings” button in the bottom right corner to set multiple screens.



3.1.2 MULTIPLE SCREENS DISPLAY

Multiple client device screens can be shared to the large display at the same time, and the screen of the large display will be split automatically.



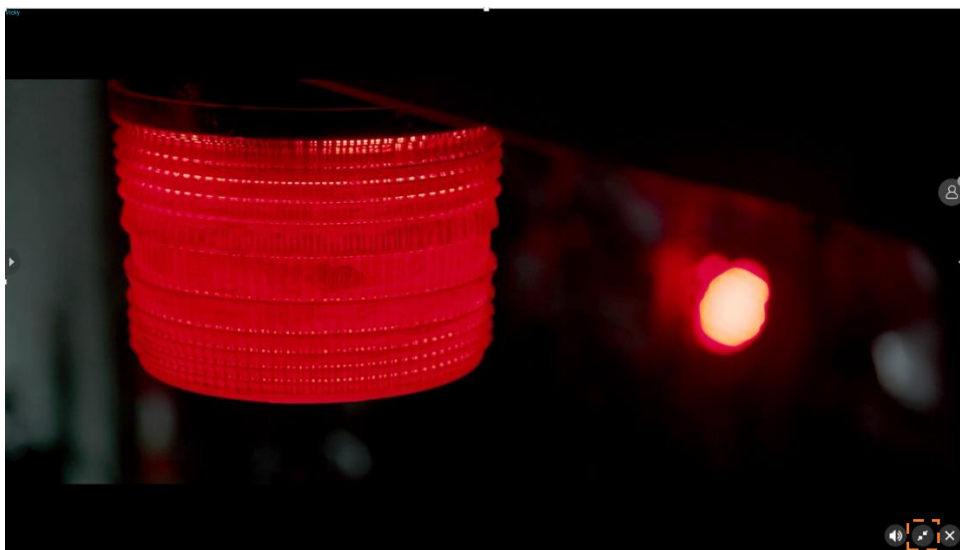
3.1.3 SWITCH THE AUDIO OUTPUT SOURCE

The audio of the last sharing device will be output by default from the large display on multi-screen mode. You can tap any one of the split windows on the large display to select the audio output source.

Note: The audio of Android phones in sharing will be output from phones for lack of audio access permission to Android phones.


3.1.4 FULL-SCREEN OR MULTIPLE SCREENS

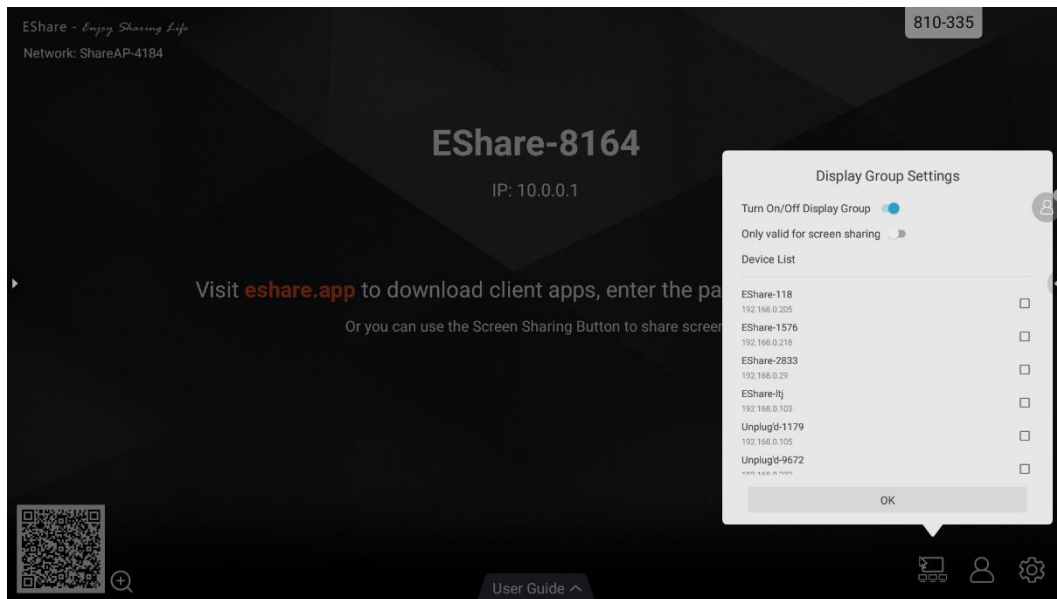
Tap the Full-Screen icon at the bottom right corner of the large display on multi-screen mode to full-screen it. Click the icon again to exit the full-screen and go back to multiple screens.



3.2 DISPLAY GROUP SETTINGS

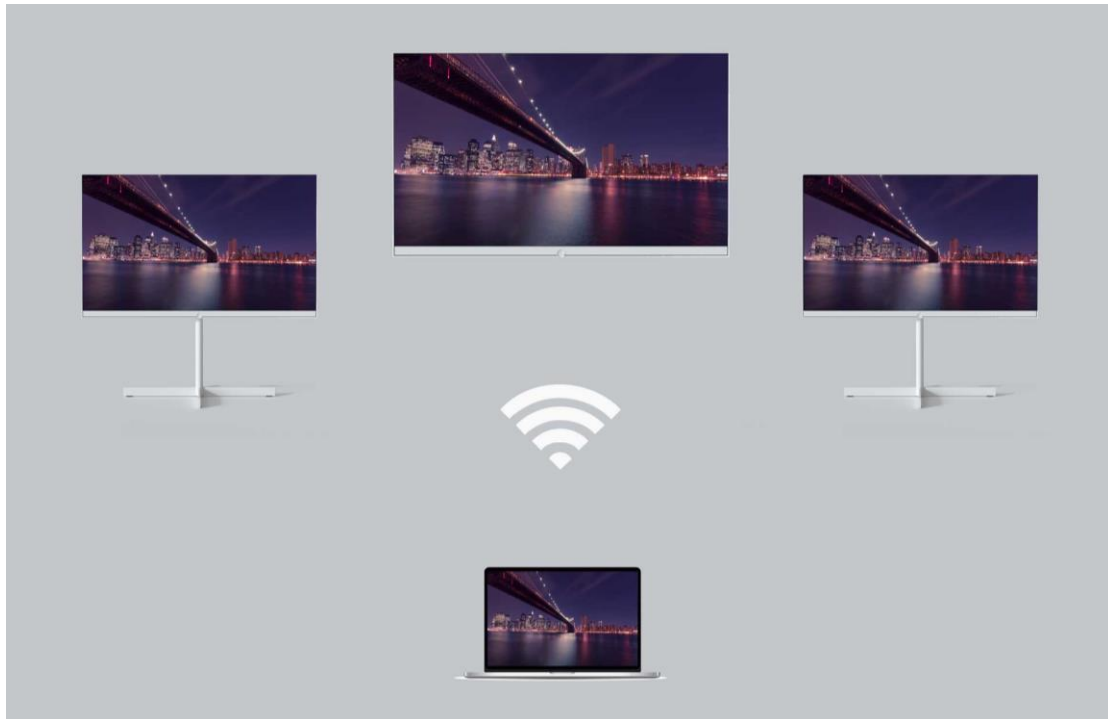
3.2.1 DISPLAY GROUP SETTINGS

Launch ESharePro, click the Display Group icon  to enter the setting dialog, turn on the display group feature, and you will find other ESharePro preinstalled devices in the same network (if any) are listed. Next, select the device to join the display group, and click “OK” to save the settings.



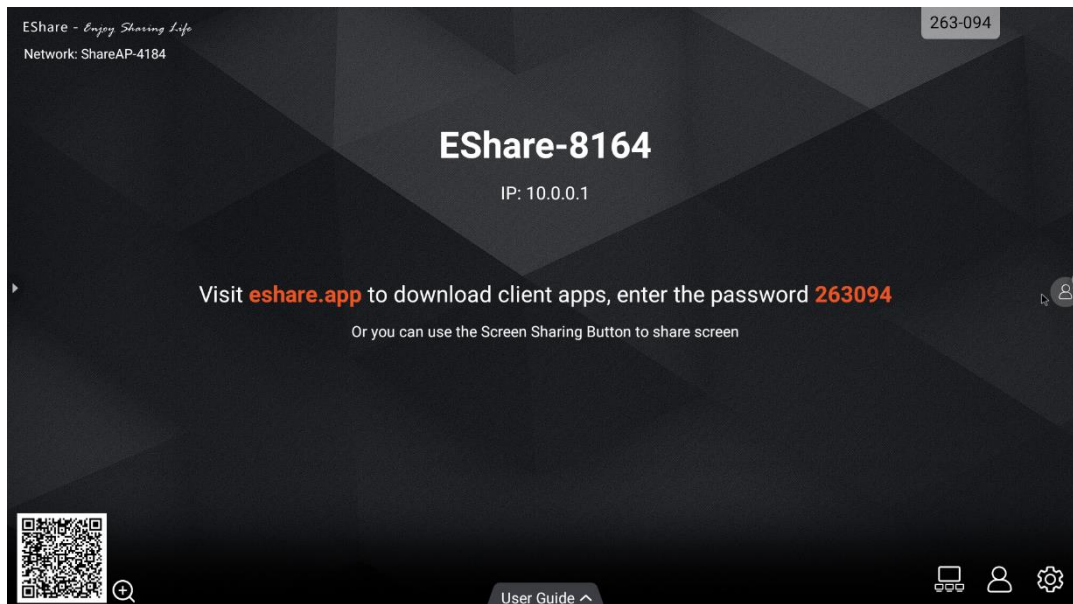
3.2.2 SHARE SCREEN TO THE DISPLAY GROUP

After the setting mentioned above, share your screen to the main large display, and the screen of your client device will be shown on all the large displays in the group at the same time.



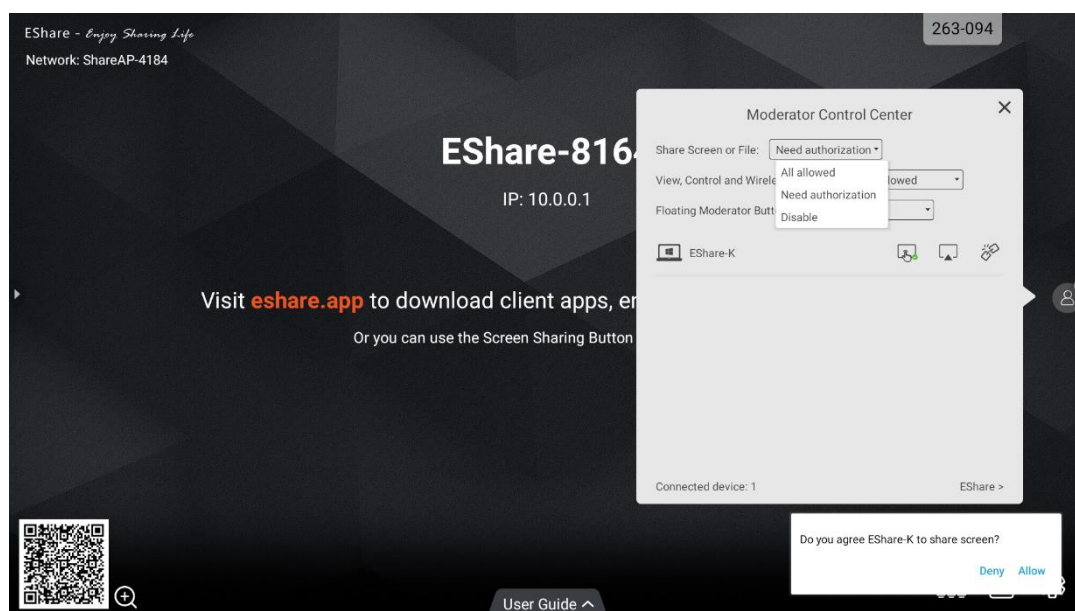
3.3 MODERATOR MODE

Launch "ESharePro" and click the moderator control button in the bottom right corner to enter the moderator control center. You can also enter the moderator control center by tapping the floating moderator button.



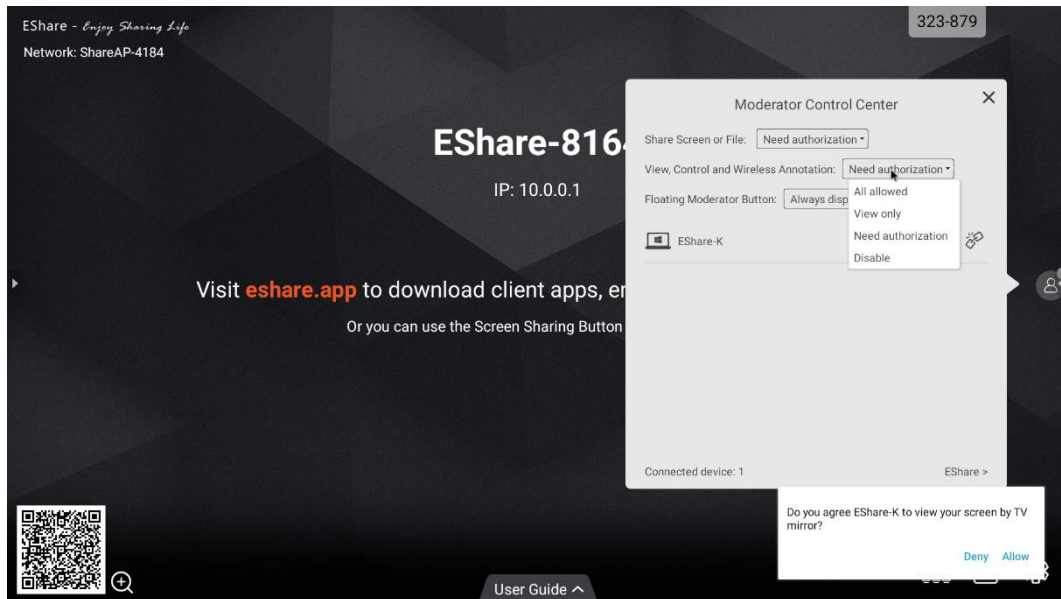
3.3.1 OPTIONS FOR “SHARE SCREEN”

- **Allowed:** client devices can share screens or share images/audio/videos/files to the large display. The client app for iOS or Android can also share the camera to the large display in real time.
- **Need authorization:** client devices can share screen or share images/audio/videos/files/camera to the large display only when the option “Allow” is selected in the authorization dialog for screen sharing.
- **Disable:** any client devices cannot share images/audio/videos/files/camera shot if the option of “Share Screen or File” is set as “Disable”.




3.3.2 OPTIONS FOR “VIEW, CONTROL AND WIRELESS ANNOTATION”

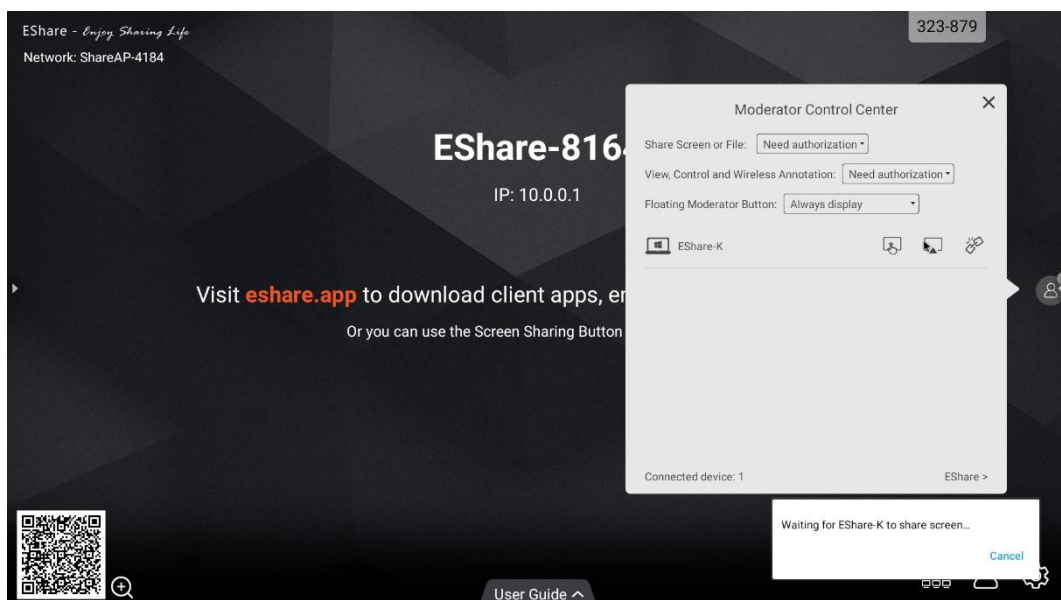
- **Allowed:** client devices can view and control the large display, can make annotations in TV Mirror or Remote Control.
- **Need authorization:** client devices can view and control the large display and can make annotations in TV Mirror or Remote Control only when the option “Allow” is selected in the authorization dialog.
- **View only:** client devices can only view the large display in TV Mirror but cannot control the large display or make annotations.
- **Disable:** no client devices can view, control the large display in TV Mirror or Remote Control, or make annotations.




3.3.3 OTHER OPTIONS IN MODERATOR CONTROL CENTER

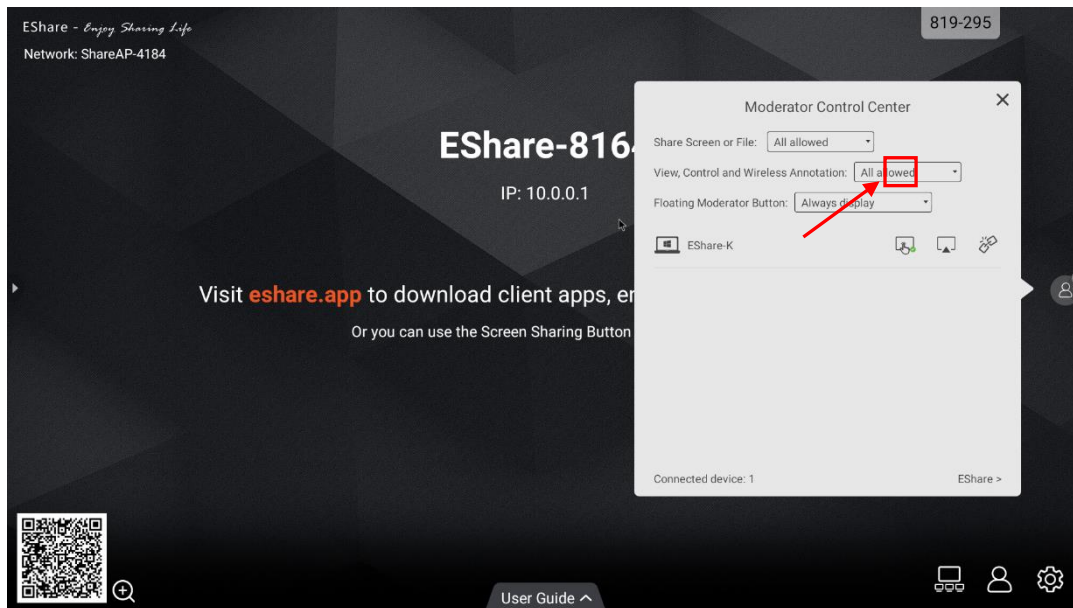
Precondition: the client device is connected to the large display.


- **Invite the client device to share screen:** select any one client device in the moderator control center, and click the button  to invite the client device to share screen, and tap this button to stop sharing when the client device is sharing screen.

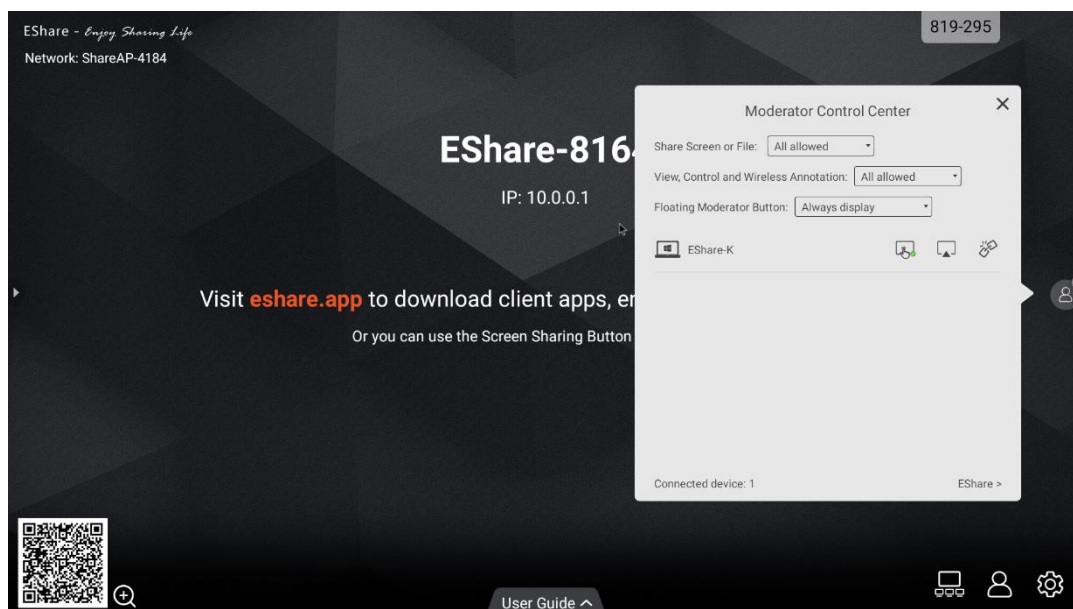


- **Allow the client device to control the large display:** tap the screen control button  to enable or disable the client's control permission for the large display. If this

button is marked with a small green check mark, it shows the client can control the large display.



- **Disconnect the client device:** tap the "disconnect" button , and select "OK" in the dialog to disconnect the client device.



4. TECHNICAL SUPPORT

Please fill in your RMA or Product question on our website

<https://www.triumphboard.com/support/technical-support/>

If you have any questions, please email us at contact@triumphboard.com

TRIUMPH BOARD a.s.

Neklanova 122/15

128 00 Prague 2

Czech Republic

EU

Phone: +420 224 910 221

E-mail: info@triumphboard.com www.triumphboard.com

Notices

Every effort has been made to ensure all information contained in this user guide is correct, but the accuracy or completeness is not guaranteed. Before using this device, you must evaluate it and determine if it is suitable for your intended application. You assume all risks and liability associated with such use. Any statements related to this device not contained in this manual or any contrary statements appearing on your purchase order shall have no force of effect unless expressly agreed upon, in writing, with this company.

Reproduction or reprinting of this user guide or any part without permission is prohibited.

The content of this user manual is subject to change without prior notice.