

TRIUMPH BOARD Electric Lift System for LED LCD's

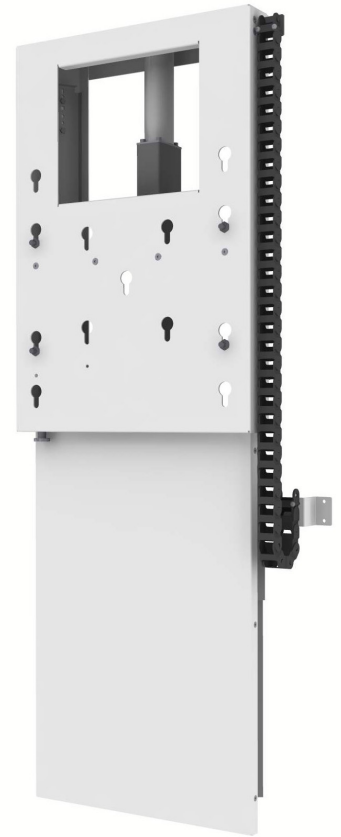
The TRIUMPH BOARD Electric Lift System for TRIUMPH BOARD 55", 65", 70" MULTI Touch LED LCD has an optional wall mounted Electric Lift so that the height range is 65 cm.

For the easy addition of LED LCD on the wall, the TRIUMPH BOARD Electric Lift Stand has an assembly hitch corresponding to the VESA standard.

The TRIUMPH BOARD Electric Lift Stand is designed to provide a high level of convenience as well as quiet and smooth attachment of LED LCD throughout its lifespan.

Features

- Elegant modern design
- Professional steel and aluminum construction
- Simple assembly
- Components withstanding long-term wear
- Quiet operation and easy handling
- No need for maintenance



Specification

EAN:	8592580082283
Model:	TRIUMPH BOARD Electric Lift System for LED LCD's
Designed for:	Interactive TRIUMPH BOARD 55"/65"/70" MULTI Touch LED LCD Monitors
Material:	steel, plastic, coated aluminum
Assembly hitch:	VESA standard 400 x 400, 400 x 200
Lift of Stand:	650 mm
Maximum size of LED LCD monitor:	1520 mm height
Centre of LED LCD monitor at highest position:	943 mm (measured from bottom of Lift System)
Centre of LED LCD monitor at lowest position:	293 mm (measured from bottom of Lift System)
Maximum Load:	100 kg
Control unit:	Panel with connectors, switch, RJ-45, IEC C22, cable intake 230
Power source:	VAC 50-60 Hz / 24 VDC (with internal installed power supply)
Dimensions without packaging:	766 x 540 x 152 mm
Dimensions with packaging:	approx. 800 x 580 x 180 mm
Weight without packaging:	49 kg
Weight with packaging:	50 kg in heavy duty cardboard box

