

# User Manual v 1.0

May 2013

## TRIUMPH BOARD Electric lift system for LED LCD's



# CONTENT

1) Product Description.....	3
2) Technical Specification .....	2
3) Package Content .....	3
4) Wall Mount Installation .....	3
5) Electronical System Connection.....	10
6) Repair Service and Contacts .....	11

## DECLARATION OF CONFORMITY

We TRIUMPH BOARD a.s., Neklanova 122/15, 128 00 Praha 2

Declare under sole responsibility that the product:

**TRIUMPH BOARD Electric Lift System for LED LCD's**

**Model:** Electric Lift System for LED LCD's

**EAN:** 8592580081798

Is in conformity of essential requirements of EU directives:

EU Standards
Machine 89/392/EEG with 91/368/EEG and 93/44/EEG
EMC 89/336/EEG with EN 55014 and EN 55104
Low voltage 73/23/EEC with EN 60335/1

In the configuration tested, the EUT complied with the standards specified above.

Place of Issue: Prague

Datum of issue: 11<sup>th</sup> April 2013



---

Ing. Ondřej Kryšpín, Chairman of the Board of Directors

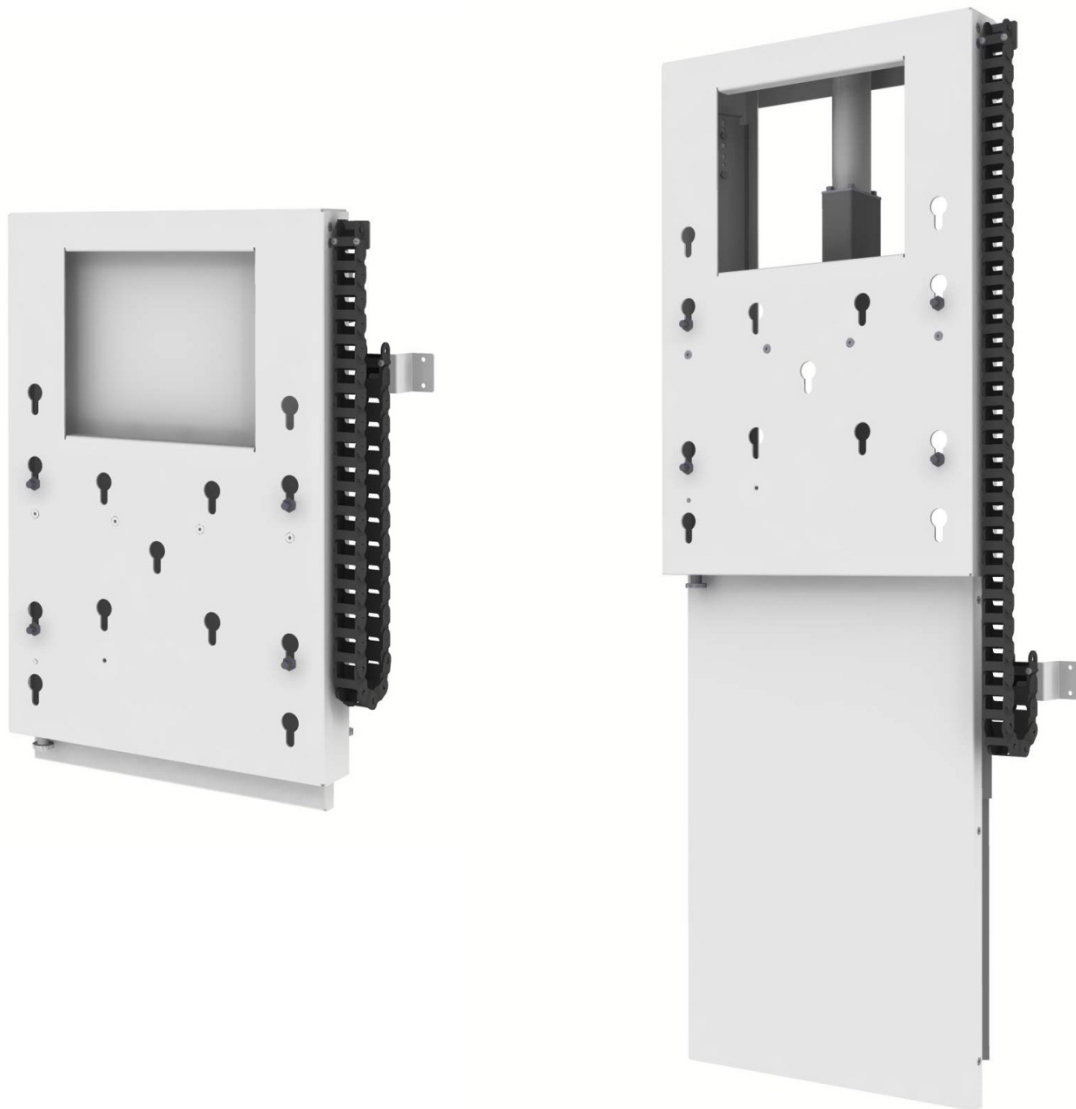
Note: Translation from original CE

## 1) Product Description

TRIUMPH BOARD Electric lift system for TRIUMPH BOARD 55" and 70" MULTI Touch LED LCD is equipped with an electric lift that allows for positioning of height within a range of 65 cm.

For the easy addition of LED LCD monitors, the TRIUMPH BOARD Electric lift stand is equipped with an assembly hitch corresponding to the VESA standard.

TRIUMPH BOARD Electric lift stand is designed to provide a high level of comfort as well as the quiet and smooth attachment of LED LCD monitors for the entire period of the product's lifespan.



## 2) Technical Specification

EAN:	8592580082313
Model:	TRIUMPH BOARD Electric lift system for LED LCD's
Designed for:	Interactive TRIUMPH BOARD 55 and 70" MULTI Touch LED LCD Monitors
Stand material:	steel, plastic, coated aluminium
Assembly hitch:	VESA standard 400 x 400, 400 x 200
Lift of Stand:	650 mm
Maximum size of LED LCD monitor:	1520 mm height
Centre of LED LCD monitor at highest position (measured from bottom of lift System):	943 mm
Centre of LED LCD monitor at lowest position (measured from bottom of lift System):	293 mm
Maximum Load:	100 kg
Control unit:	Panel with connectors, switch, RJ-45, IEC C22, cable intake
Power source:	230 VAC 50-60 Hz / 24 VDC (with internal installed power supply)
Dimensions without packaging :	1175-1825 x 767 x 688 mm
Dimensions with packaging:	approx. 800x510x180 mm
Weight without packaging:	49 kg
Weight with packaging:	50 kg in heavy duty cardboard box

### 3) Package Content



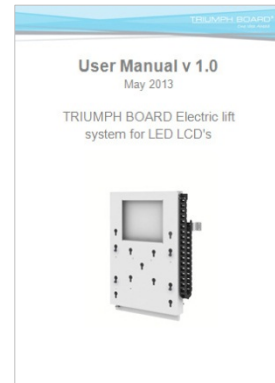
Lift system



Electric components



Mounting cams



Manual

### 4) Wall Mount Installation

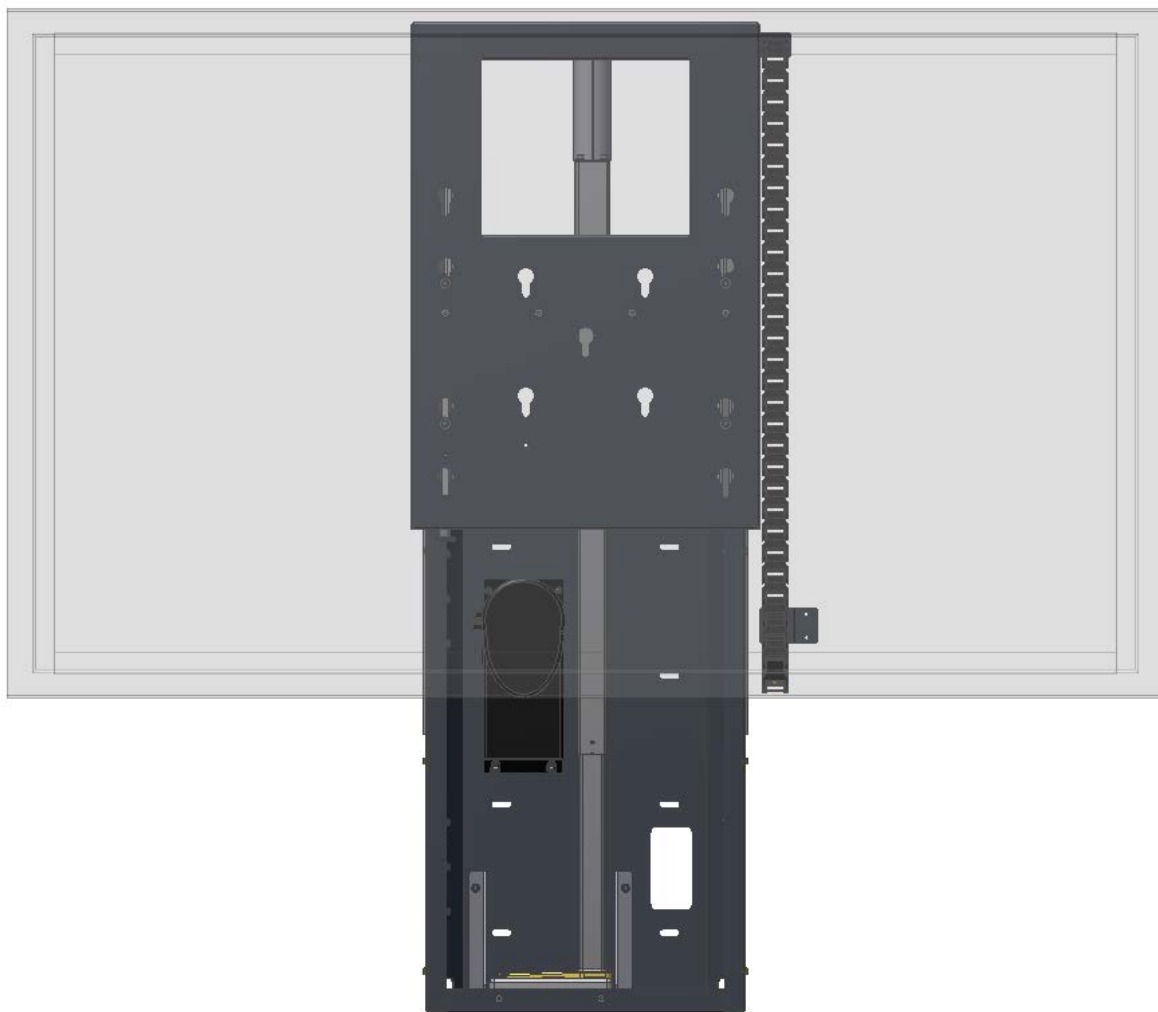
Use the correct tools for a proper installation.



Install the lift on a free to choose height. Keep in mind to install the lift incl. screen that the top of the screen does not hit the ceiling and the active area is reachable in the highest position.

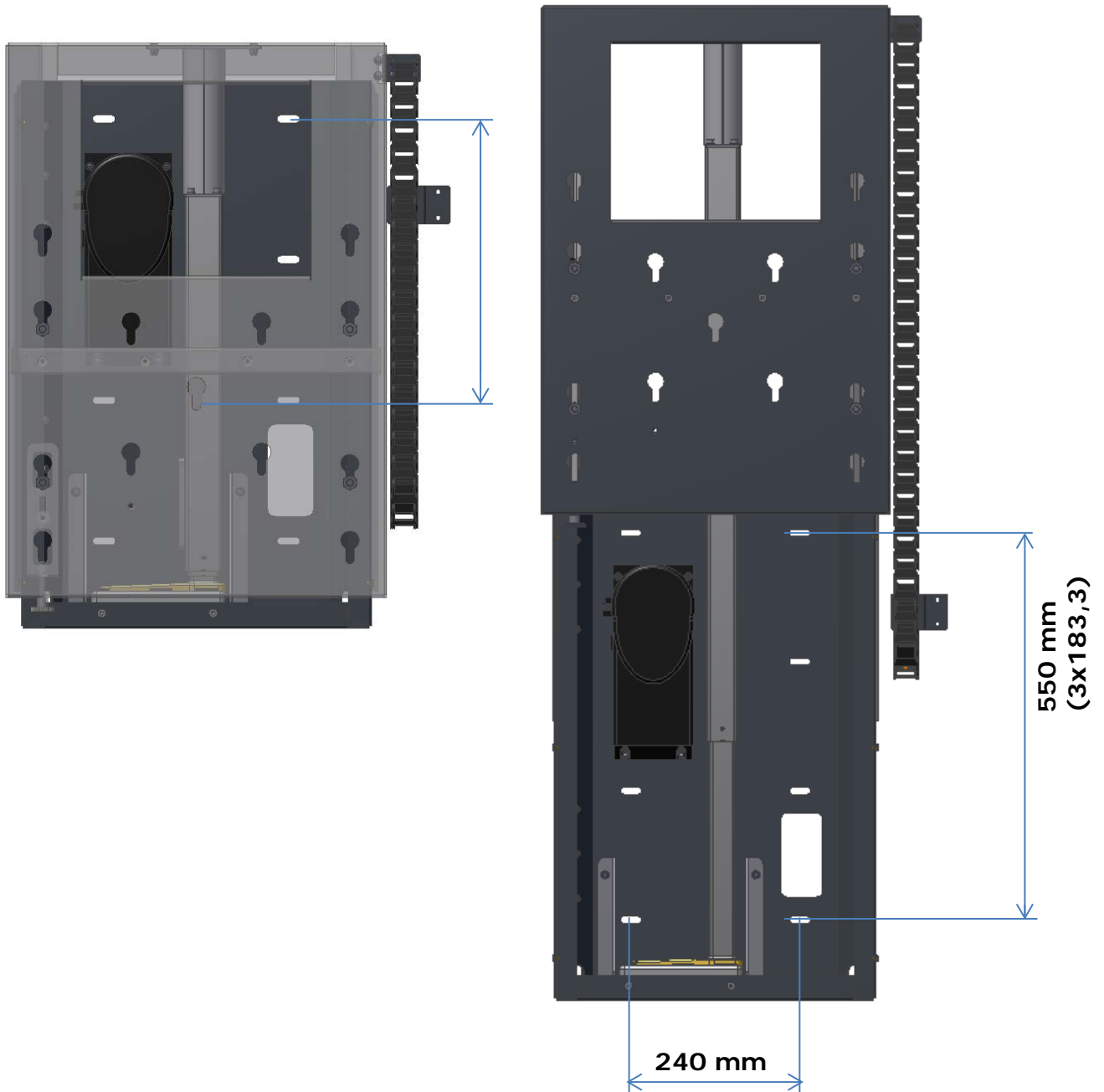
The lift has a travel of 650 mm and the distance from centre screen tot the bottom of the system is 940 mm.

**Remark:** To limit and programm the travel of the system use the wireless remote controll .



Measure the positions of the wall mounting holes on the wall.

The centre of the screen position is 374 mm measured from the top mounting hole.



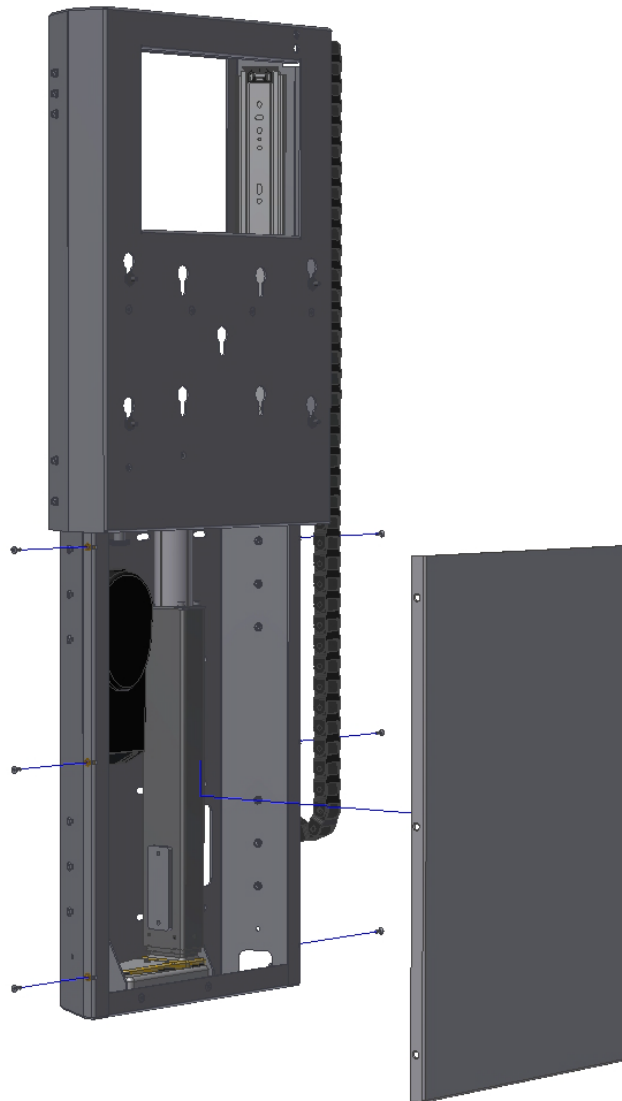


Drill the holes and use the correct mounting materials suitable for the wall type.

Connect the system to a 230 VAC wall socket.

With the manual control it is possible now to raise the system to the upper limit.

Install the front cover of the system.



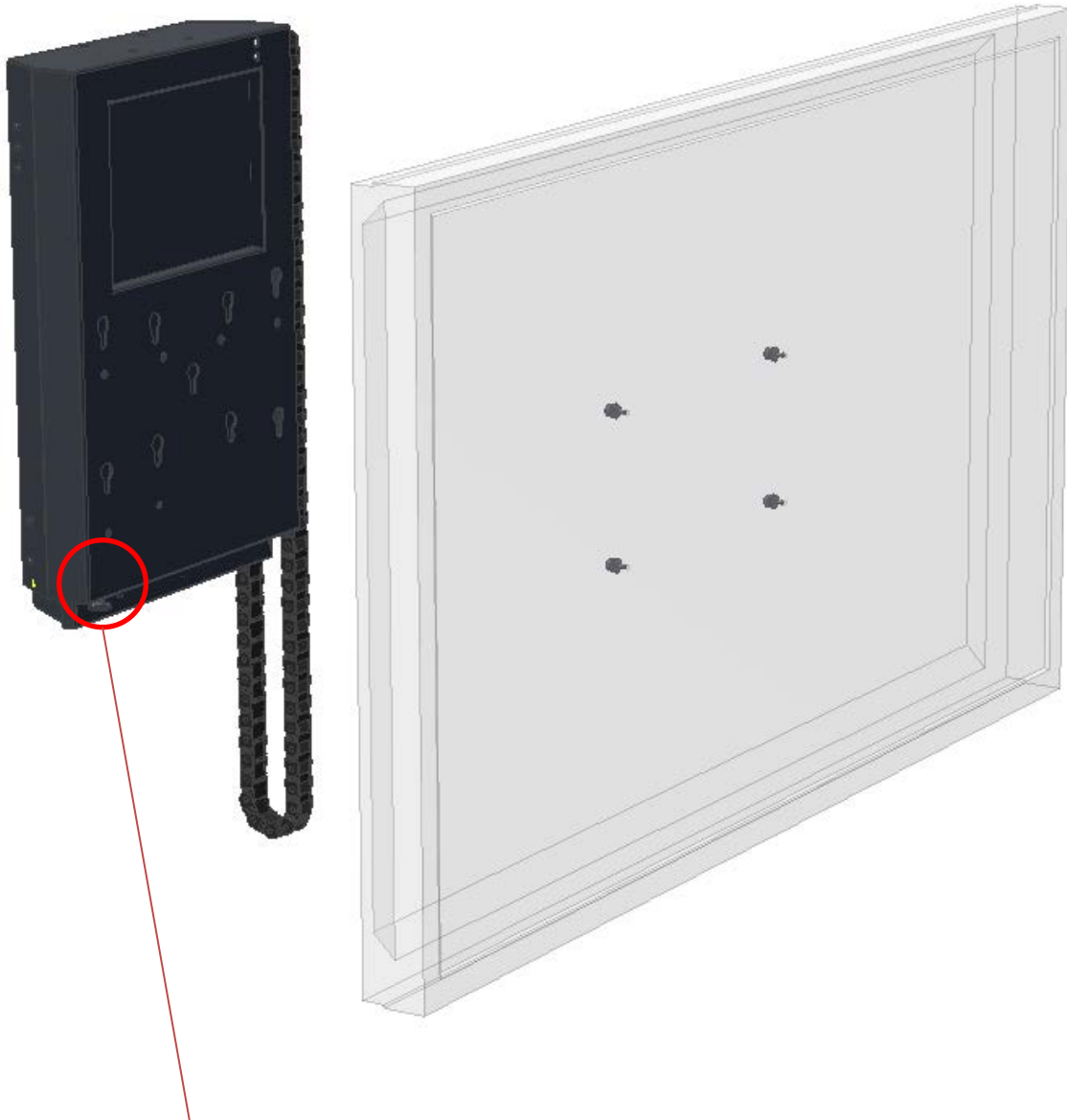
Install the cable guidance chain to the movable part of the lift. Install the wall bracket to the wall, keeping mind of the max. travel of the lift. Make sure there's no tension on the cable chain in upper or lower position.



Install the monitor using the correct optional mounting cams.

Install the cams at the rear of the screen.

Lock the fitting.



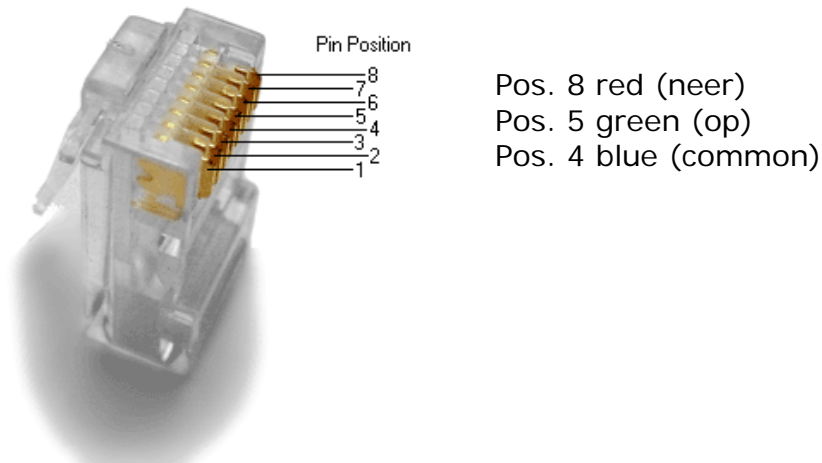
Borging  
Lock

For activating the system the standard supplied switch can be used.



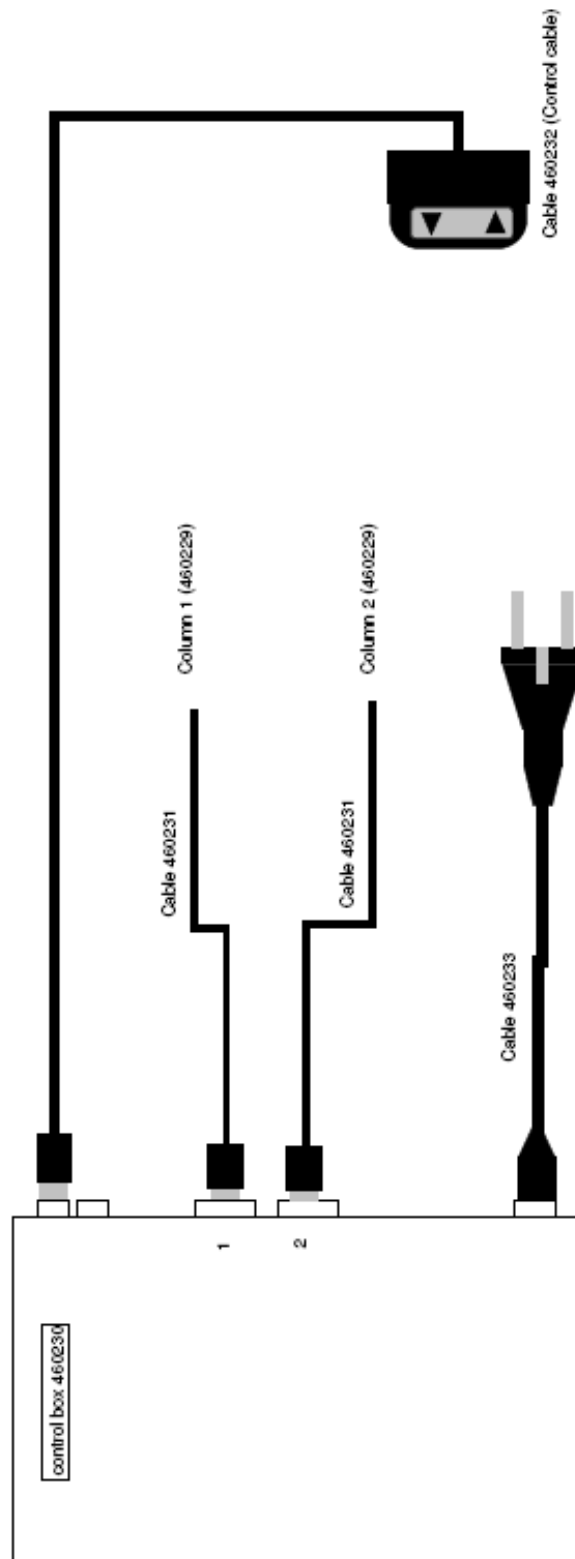
When the system is used by an external switch of control system use the below listed connections.

- Always use a potential free relay or contact closure for each direction.
- Switching delay between up and down at least 1 sec.



## 5) Electronical System Connection

Connect the control to port: 1



## 6) Repair Service and Contacts

Please contact your local supplier for the warranty and technical service or find all warranty conditions and service partners on our website [www.triumphboard.com](http://www.triumphboard.com) .  
For any questions please email us to [info@triumphboard.com](mailto:info@triumphboard.com)

### **TRIUMPH BOARD a.s.**

Neklanova 122/15

128 00 Praha 2

Czech Republic

EU

Phone: +420 224 910 221

Fax: +420 224 910 218

**E-mail:** [info@triumphboard.com](mailto:info@triumphboard.com)

[www.triumphboard.com](http://www.triumphboard.com)

### Notices

Every effort has been made to ensure all information contained in this user guide is correct, but the accuracy or completeness is not guaranteed. Before using this product, you must evaluate it and determine if it is suitable for your intended application. You assume all risks and liability associated with such use. Any statements related to this product which is not contained in this manual or any contrary statements contained on your purchase order shall have no force of effect unless expressly agreed upon, in writing, by this company.

Without this company permission, reproduction or reprinting this user guide or any part is prohibited.