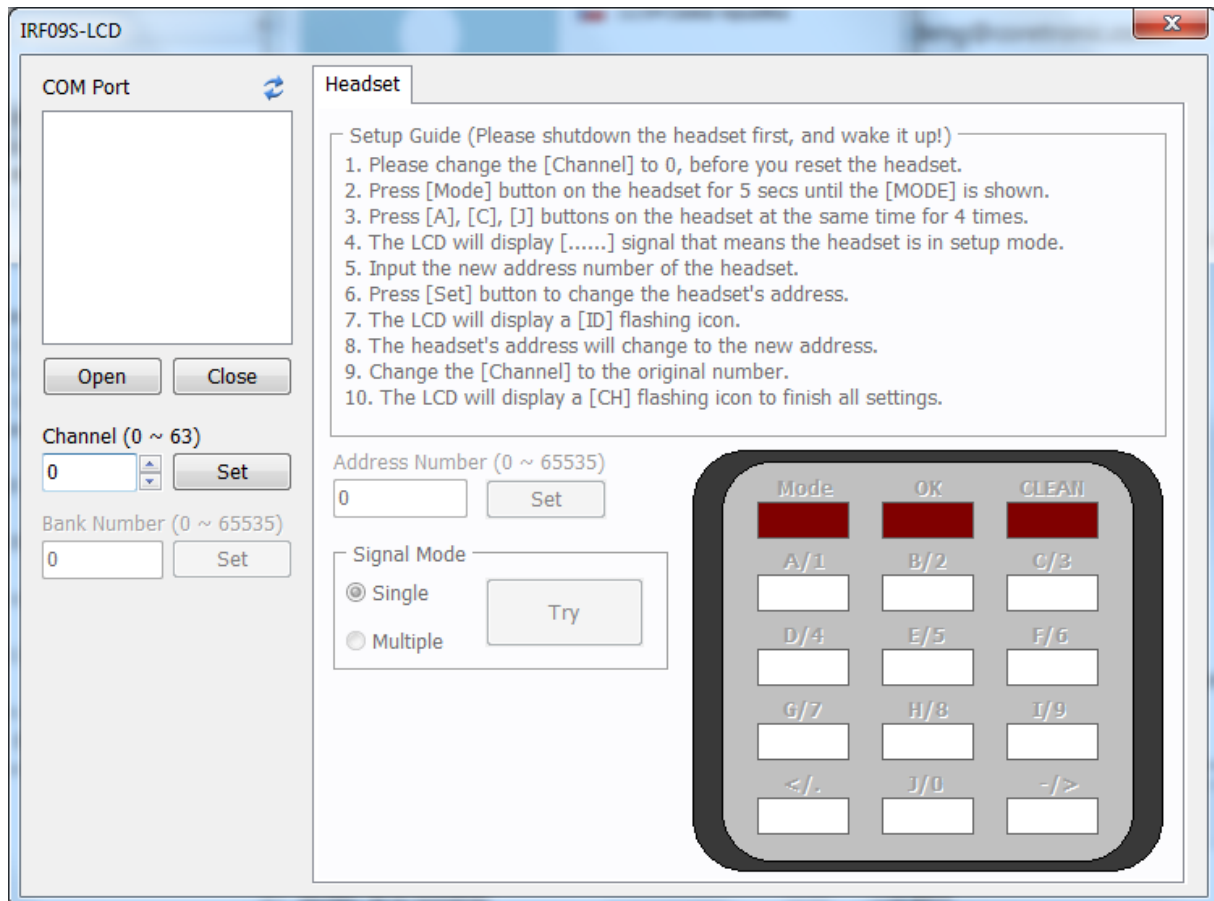


RF550 Service manual

Reprogramming the address of the clicker

- 1) Pick up a clicker that should be reprogrammed. If the clicker is powered on (display is showing any symbol) wait until clicker's display is not showing any symbol – means clicker is switched off.
- 2) Plug the receiver to the PC.
- 3) Run the IRF09SLCD.exe.
- 4) In program's window please change the channel setting to 0.
- 5) Click on Open button to connect to voting receiver.
- 6) Continue with steps shown in program's window:



- 7) Do not forget to change Address Number to the number you want the clicker address to be changed to. Press Set button to change the address.
- 8) Change channel number back to channel number of clicker (it is shown on back side of the clicker as a number, e.g. CH:1). Press Set button to change channel number.
- 9) After changing the setting try to push any button on the clicker. Program will change and show channel and address number the clicker has been changed to.