



## Document Camera A405

# USER GUIDE

english

www.TRIUMPHBOARD.com

### LIMITED WARRANTY

### Repair Service and Contacts

Please contact your local supplier for the warranty and technical service or find all warranty conditions and service partners on our website [www.triumphboard.com](http://www.triumphboard.com). For any questions please email us to [info@triumphboard.com](mailto:info@triumphboard.com).

TRIUMPH BOARD a.s.  
Neklanova 122/15  
128 00 Praha 2  
Czech Republic  
EU

Phone: +420 224910221  
Fax: +420 224910218  
E-mail: [info@triumphboard.com](mailto:info@triumphboard.com)  
[www.triumphboard.com](http://www.triumphboard.com)

PLEASE see our website [www.triumphboard.com](http://www.triumphboard.com) for updates and fresh product information in the product and support sections.

### INTRODUCTION

The 5-Megapixel Document Camera is the ideal tool for presentations, image capturing and video recording. With this visual presenter and your computer, you can capture real-time images of 3D objects (up to 8.3 x 11.7 x 15" in size), magazines, books, documents, pictures and business cards and present through a monitor or projector. The unique down-facing lens makes repetitive image capturing, demonstrations, tutorials and lectures comfortable and simple. Along with these great features, use the included CamScanner NimoDoc software with your Document Camera A405 to take snapshots or record videos of just about anything, easily edit images with the basic editing tools, plus enjoy Optical Character Recognition (OCR) function that scans your captured image and extracts text, making it easy to share information without retyping. The Document Camera A405 combines all the great features of today's most popular image capturing devices into one powerful product.

#### SPECIFICATIONS

- Image Sensor 5.0 Megapixel CMOS Color Sensor
- Interface USB 2.0
- Resolution 2592 x 1944
- Image File Format JPG, NSD
- Image Capture Speed 1 second
- Doc File Format DOC, PDF, XLS
- Video File Format WMV
- Shooting Area Up to A4 Size - 8.3 x 11.7" (210 x 297mm)
- Focal Length 4" to 15" (101 to 381mm)
- Focus Manual
- Frame Rate 30 frames per second (max)
- LED Lights 14
- White Balance Autoa
- Operating Dimensions 12.2 x 3.5 x 13.8" (310 x 89 x 350mm)
- Folded Dimensions 4.1 x 3.5 x 13.8" (105 x 89 x 350mm)
- Weight 1.8 Lbs (800g)

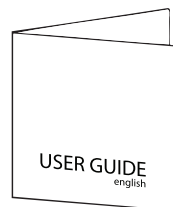
#### REQUIREMENTS

- Operating System: Windows® 7, Windows® Vista & Windows® XP
- Connectivity Interface: USB 2.0 Port

### CONTENS



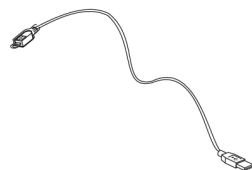
Document Camera A405



User Guide



Software CD



USB Cable



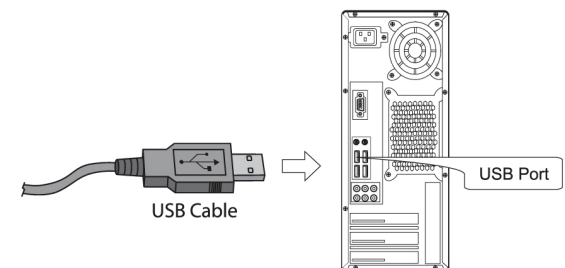
Reversible Soft pad

### DESCRIPTION

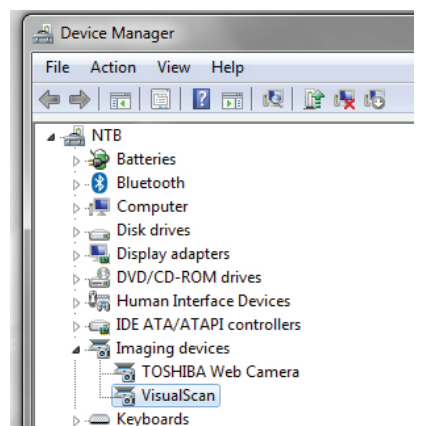


### INSTALLATION

1. Plug the USB connector into an available USB port on your computer and connect the other end of USB cable to the back of Document Camera A405.

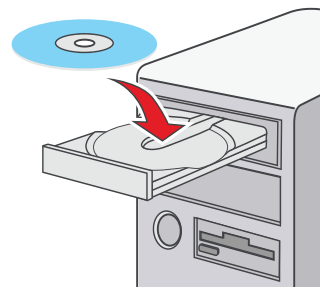


2. Document Camera A405 will connect automatically to your computer (A405 is a driverless device when used with Windows® 7, Windows® Vista or Windows® XP operating systems). Your computer will recognized device as USB 2.0 Camera under Imaging Devices in Device Manager menu.



### SOFTWARE INSTALLATION

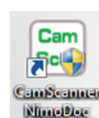
- Insert the enclosed Software CD into your computer's CD-ROM.
- Browse CD content and launch NimoDoc\_V3.22.exe



- Follow the on-screen instructions to complete installation.

### GETTING START

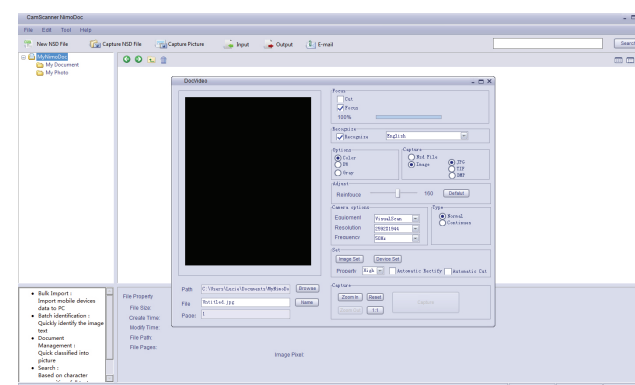
- To begin using CamScanner NimoDoc software with Document Camera A405, click on CamScanner NimoDoc Icon located on computer desktop.



### Capture Picture

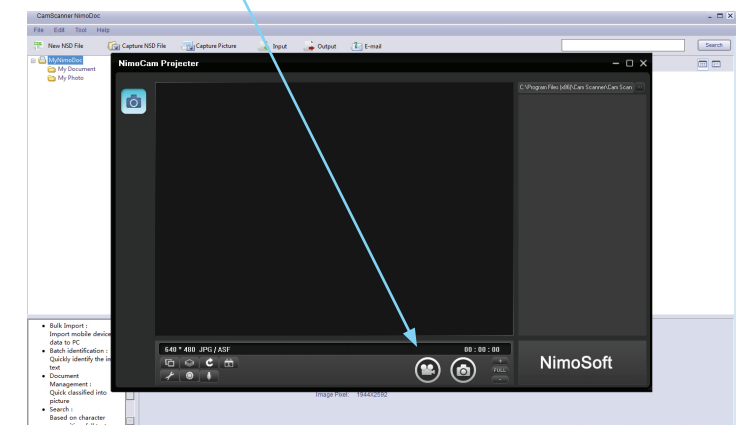
- In Main program tray click on Capture Picture to simply capture snapshot. For capture snapshot and use integrated editing tools and OCR function click on Capture NSD File.

- Capturing settings (like color, brightness, contrast) for capture picture can be adjusted in DocVideo window.



### Record Video

- In software Main menu select File/Camera and in NimoCam projector window click on Video camera icon to record video.



Note:

- To obtain the best image/recording results place Document Camera A405 and objects on Reversible Soft Position Pad.
- Preview image in software and adjust the Focus Wheel as needed to obtain clear images of objects.
- If natural light source is not bright enough, turn on the built-in LED lights to increase the brightness.