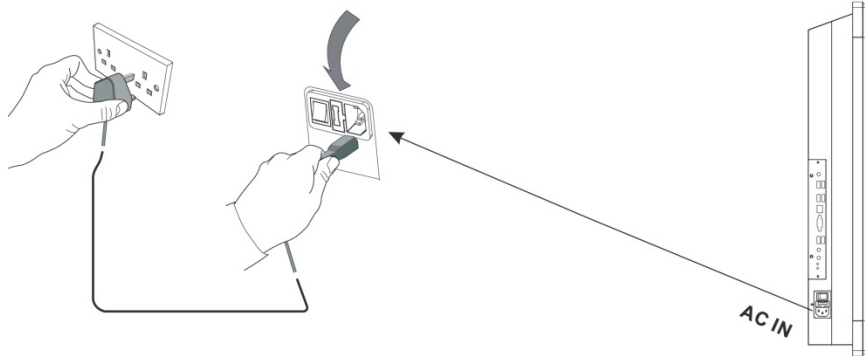
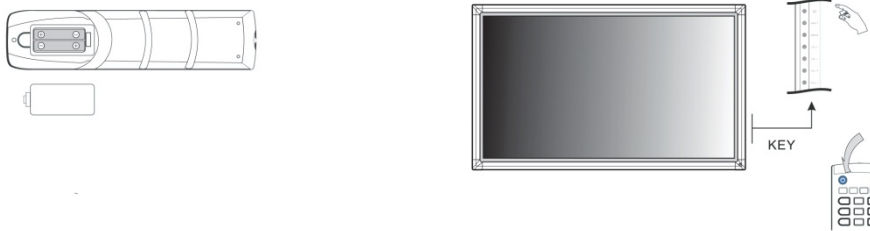


QUICK START GUIDE

This manual can tell you the base steps of connecting the interactive intelligent panel.
If you have any question, please read the full User Manual in the disc.

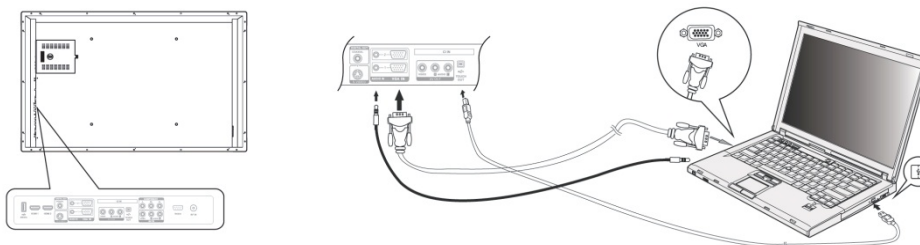


- Plug the mains lead into an appropriate socket($\leq 220v$).
- Switch the power behind, and the power indicator is on red on the front panel.
- Remove the cover on the rear of the remote control as shown, Insert two AAA equivalent batteries.
- Replace the cover by aligning it with the base of the remote control and pressing it back into place.



Do not use the refresh battery, such as nickel – cadmium cell. For its different shape and function. It is hard to ensure the operate accurately, please handle the scrap battery in environmental way.

- Press POWER ON/OFF on the side panel or the remote control.
- The indicator in the down right shows green, that means the unit is start.
- Press input for the source you need.



External connect PC mode

- Connect a VGA cable (15pin) between the VGA and external PC.
- Connect a audio cable between the PC and audio at the same time.
- Connect a USB cable to USB terminal under the external PC, Press INPUT switch to PC source.
- Graphical output from computer switch to an external monitor.
- For potential calibration and settings of the external device to install and start Touch Service Driver.