

INSTRUCTIONS FOR ASSEMBLY

AI stand with lift system

Fig. 1 Stand assembly

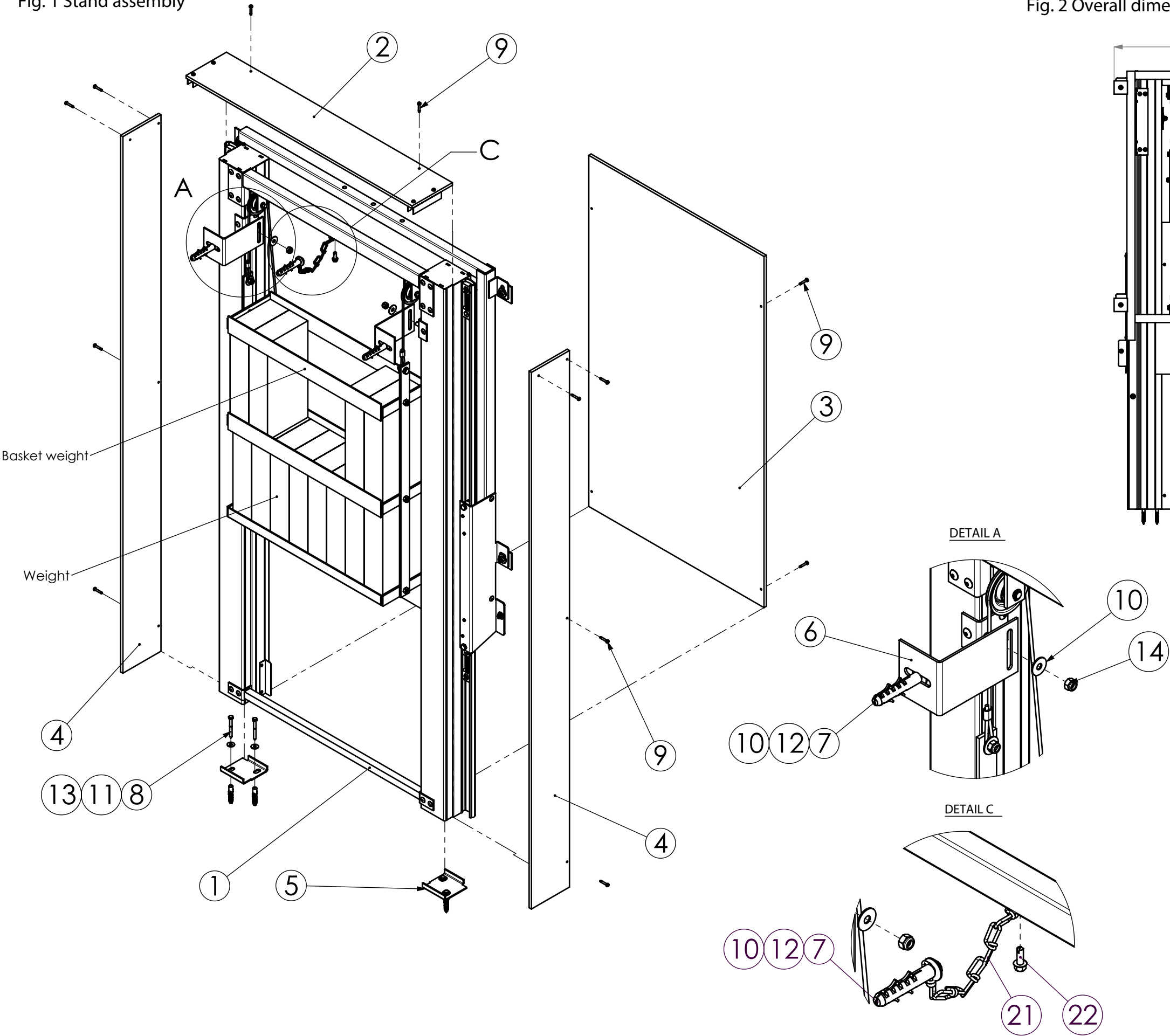
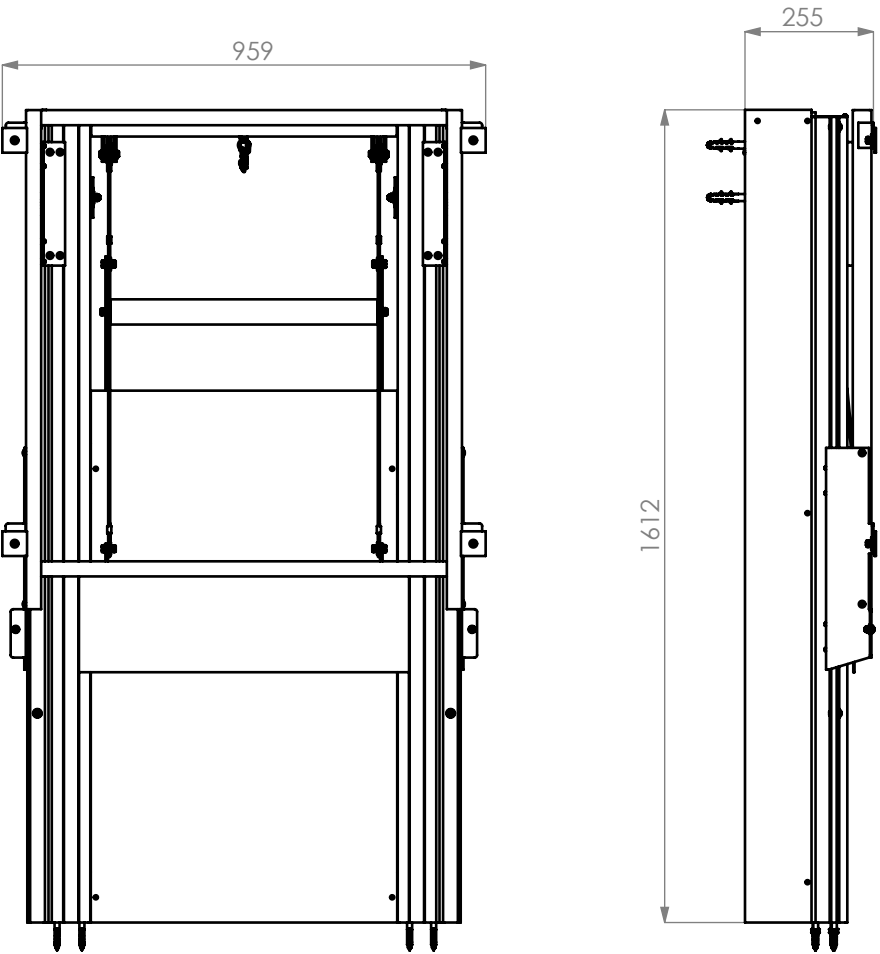


Fig. 2 Overall dimensions of the stand



3. Component List

Pos.	Name	Quantity
1	Stand	1
2	Top cover	1
3	Front cover	1
4	Side cover	2
5	Foot	2
6	Bracket	2
7	Screw 8x80	3
8	Screw 6x60	4
9	Screw TEX 4.2x25	14
10	Washer 8 Zn	9
11	Washer 6 zn	6
12	Anchors pr. 14x75	3
13	Anchors pr. 10	4
14	M8 nut	6
15	Weights - brick	-
16	Adapter	4
17	M6 nut	2
18	Screw M6x16	2
21	Safety catch for AI stand with lift system	1
22	Screw TEX 6.3x19	1

Fig. 4 Mounting the board to the stand

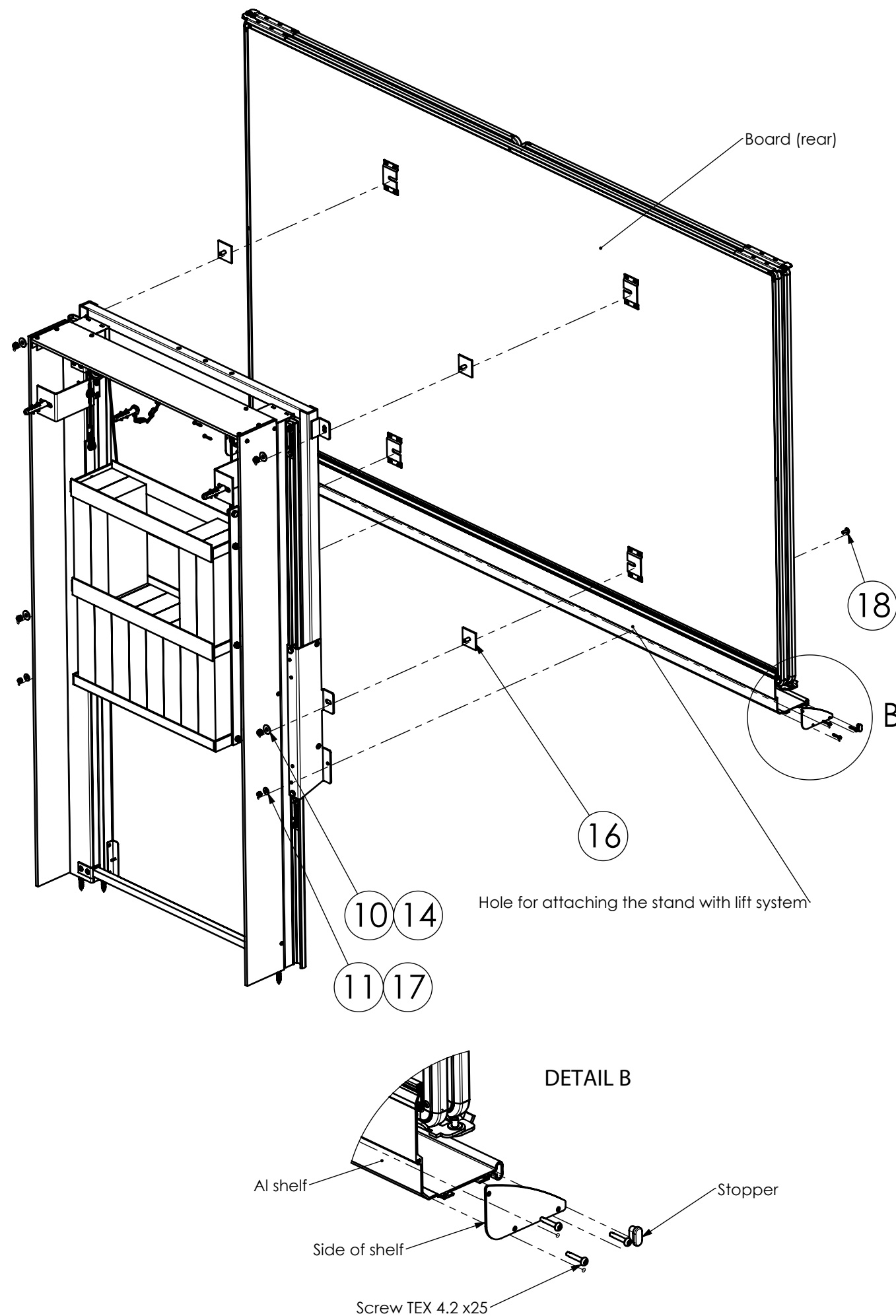
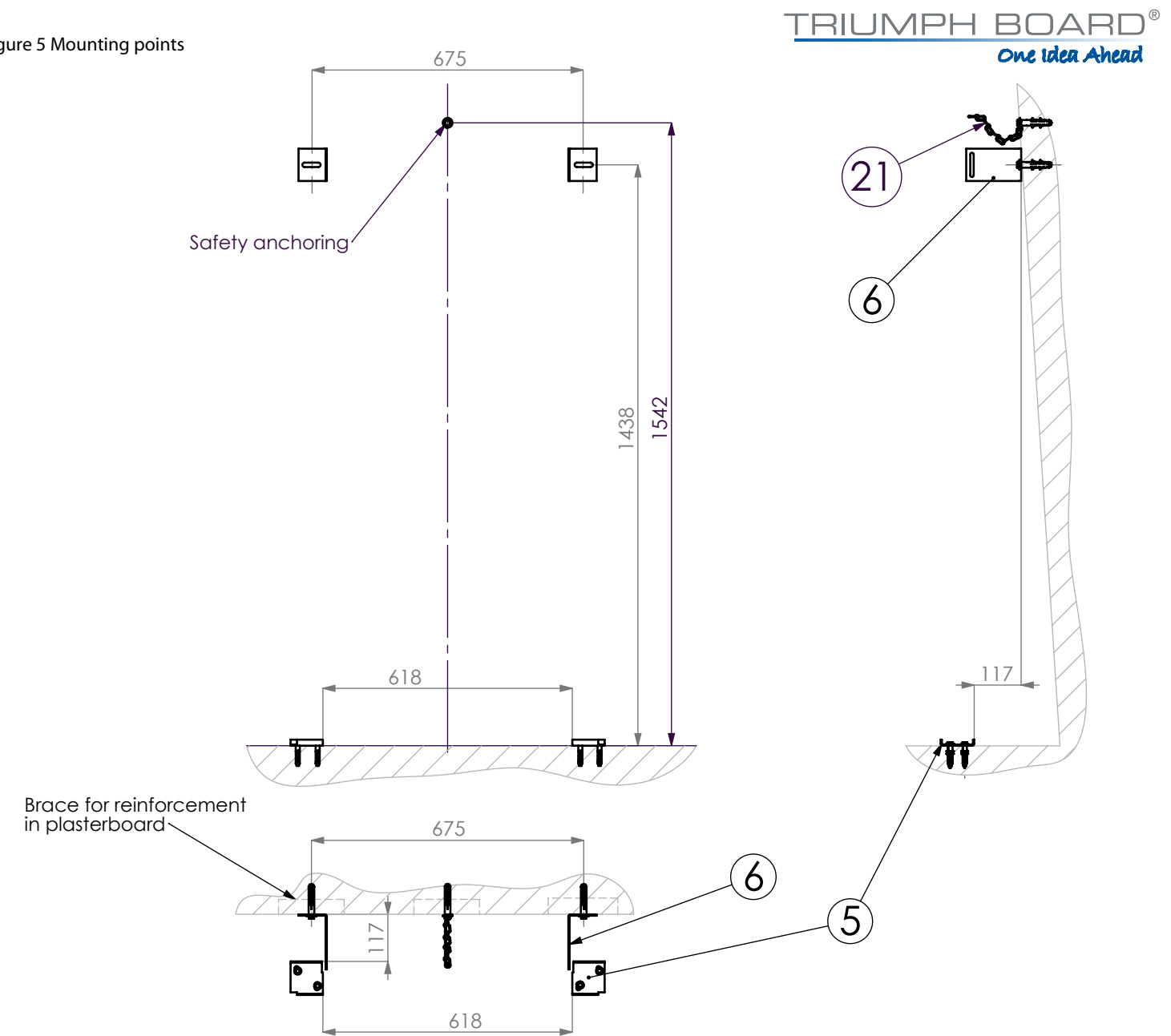


Figure 5 Mounting points



### Installation procedure

- 1) Measure out the position of the heels (5) according to Fig. 5. Mounting points. Choose the position of the heels with respect to the unevenness of the wall.  
The dimension in the diagram is valid for a perfectly perpendicular wall. Fasten each heel (8) to the floor.
- 2) Mount the brackets (6) to the posts using washers (10) and nuts (14).
- 3) Place the stand on the heels (5) and mark holes on the wall for the anchors (12) - the center of the oval holes in the brackets (7). Lift the stand off its heels. Mark a hole for installing the safety catch for the stand (21). Drill the marked holes and insert the anchors in them (12). Secure the safety catch to the wall using a screw (7) and washer (10). Lift the stand, drill the holes indicated and place it back on the heels (5).
- 4) Place the stand back on its heels (5). Secure the stand to the wall using screws (7) and washers (10). Next secure the safety catch in accordance with Detail C to the upper rung of the stand using screw TEX 6.3 x19 (22).
- 5) Turn the individual components of the basket weights to the horizontal position so that it is possible to firmly set the individual weights inside. Tighten the nuts of the lower and middle part of the basket securely. Put the required amount of weights in the basket so that the whole assembly is correctly balanced. The components of the basket must be in the horizontal position so that the basket hangs perpendicular to the floor and does not slide along the wall or any part of the stand.
- 6) Mount the covers (2, 3, 4) using screws (9). For the mounting screws (9), use power tools.
- 7) Assemble the stand (side shelves, screws TEX 4.2 x25, plug). Put the shelf in the profile at the bottom of the board. Screw the shelf in and secure with 3.5 x 6.5 screws - See DETAIL B. The material for this part of the assembly is part of the board.
- 8) Place the adapters in the board fixtures (18). Now place the board into the stand and fasten it using the washers and nuts (10, 14).
- 9) Drill holes for attaching the shelf to the stand - Fig. 4. Fasten the shelf with screws, washers and nuts (18, 11 17) to the stand.
- 10) Recheck the operation of the board and tighten all connections.

The anchoring material enclosed with the stand is designed for mounting it to a wall made of concrete or solid brick. The substrate for the stand must be strong and not crumbly.

The contractor performing the assembly is fully responsible for the assembly and the use of anchoring material.

**WARNING:** The stand must not be used in the event any of the anchoring material becomes loose.

For mounting to a plasterboard partition, it is necessary to reinforce the partition with wooden planks or beams with a thickness of at least 50mm and a width of 100mm for the full height of the partition. The center of the reinforcement - see Fig. 5 Mounting points. In this case, the stand is anchored directly to the wooden braces with the enclosed screws (7).